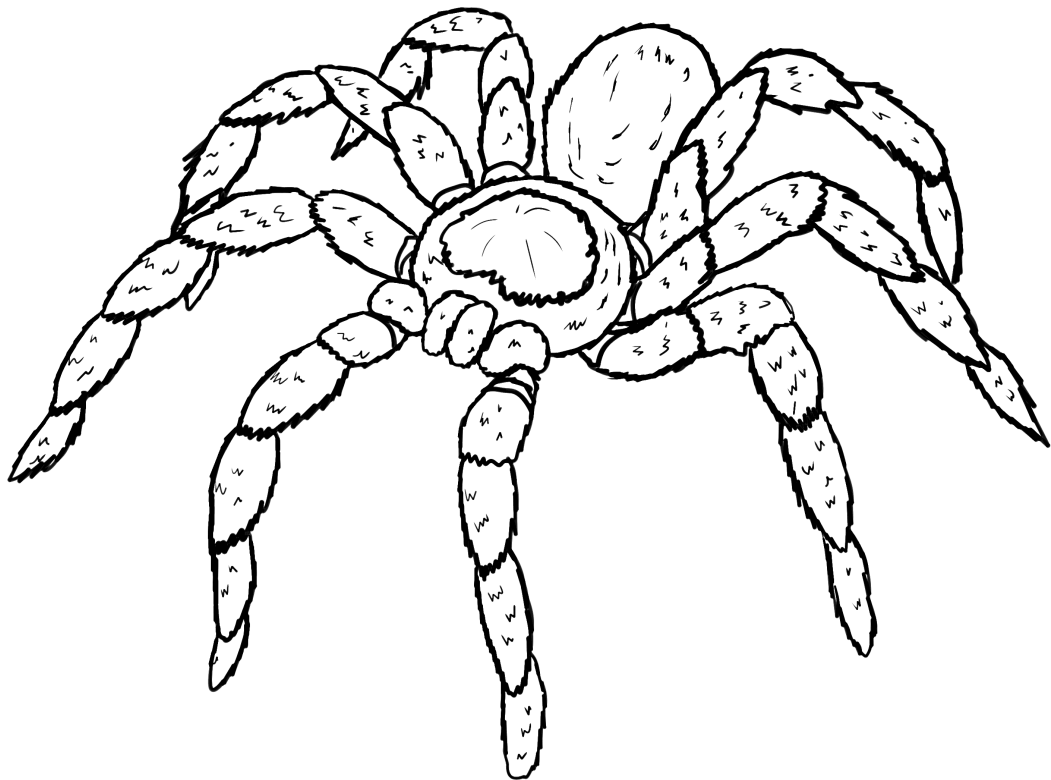


All About Tarantula Spiders



Name: _____

TARANTULAS

Life Cycle of a Tarantula Spider

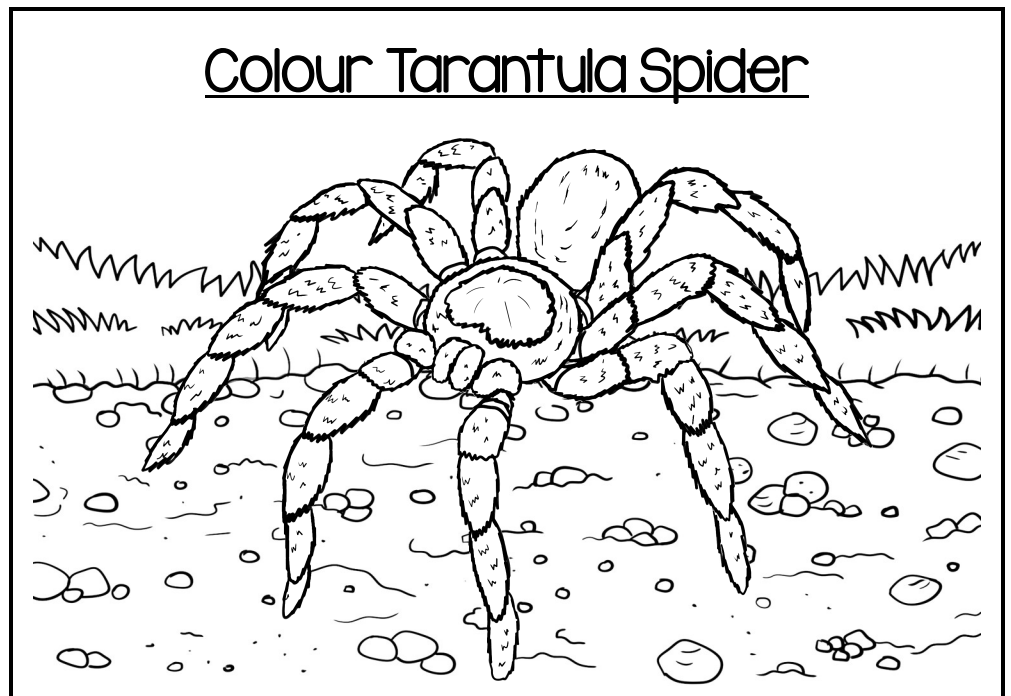
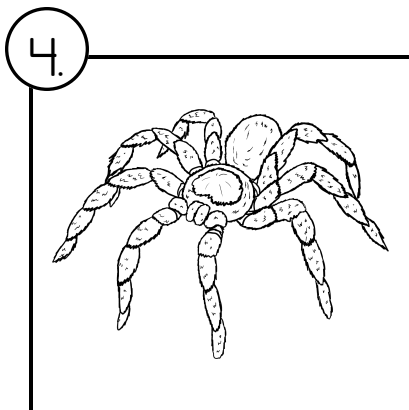
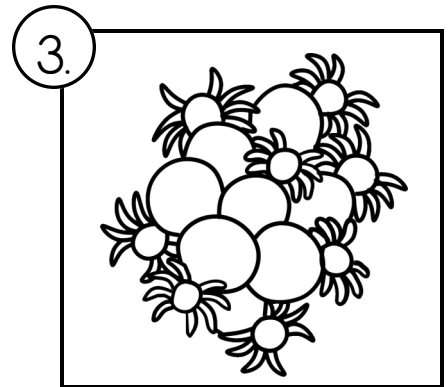
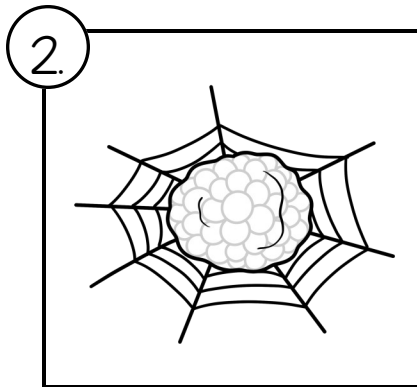
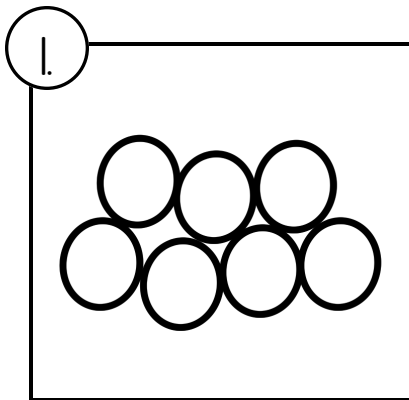
Write the life cycle of the Tarantula Spider in the correct order.

Adult Spider

Egg Sac

Spiderlings

Eggs



Parts of a Tarantula Spider

Label the part of a Tarantula Spider.

Legs

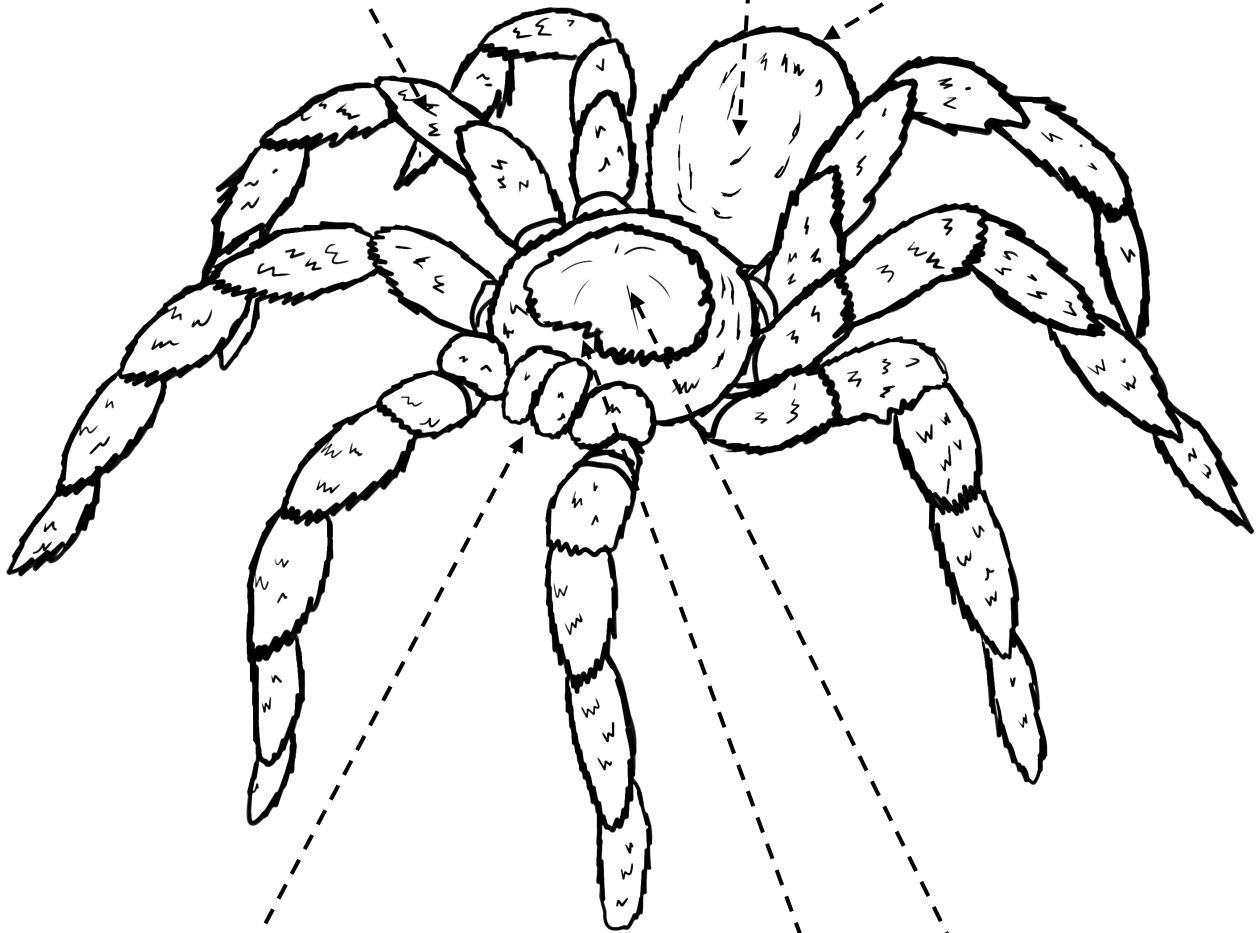
Abdomen

Cephalo -Thorax

Chelicerae

Eyes

Spinnerets



What do Tarantula Spiders Eat?

1. Tarantula Spiders are carnivores, which mean they only eat insects and meat.

Circle seven correct answers.

- I. Mice 2. Snake 3. Birds 4. Foxes 5. Frogs 7. Owls
8. Lizards 9. Beetles 10. Toads 11. Grasshoppers

What do Tarantula Spiders Live?

2. They live in habitats that are cold and warm. In which habitats might you find Tarantula Spiders in.

Circle five correct answers.

- I. Deserts 1. Wetland 3. Rainforests 4. Grassland
5. Jungles 6. Tundra 7. Forests 8. Farmland 9. Iceland

3. Tarantula Spiders can be found all over the world mostly in which continents.

Circle five correct answers.

1. North America 2. Antarctica 3. Europe 4. Asia
5. Africa 6. Arctic 7. Ocean 8. South America

About Tarantula Spiders

4. How many legs do Tarantula Spider have? _____

5. Which are belong to which group?

Circle one correct answers.

Fish Amphibians Mammals Birds Reptiles
Insects

6. Do Tarantula Spiders have long or short legs?

Circle one correct answers.

Long Legs or Short legs

7. Can Tarantula Spiders run fast or slow?

Circle one correct answers.

Slow or Fast

8. Can Tarantula Spiders jump?

Yes / No

Circle one correct answers.

9. How many eggs can females Tarantula Spiders can lay?

Circle one correct answers.

1000 eggs / 2000 eggs

9. Tarantula Spiders are warm-blooded or cold-blooded?

Circle one correct answers.

Cold-blooded

Warm-blooded

10. Tarantula Spiders are small or big?

Circle one correct answers.

Big Spider

Small Spider

11. How long do Tarantula Spiders live?

Circle one correct answers.

10 years 20 years 30 years

12. What baby Tarantula Spiders are called?

Circle one correct answers.

Calf Spiderlings Pups

12. How many eyes do Tarantula Spiders have?

Circle one correct answers.

3 Eyes 7 Eyes 8 Eyes

13. Do Tarantula Spiders hibernate?

Yes / No

Circle one correct answers.

14. Do Tarantula Spiders have teeth?

Yes / No

Circle one correct answers.

15. What colour is Tarantula Spiders?

16. What type of skin do Tarantula Spiders have?

17. Tarantula Spiders are nocturnal which means they stay awake at day or night?

Night / Day

Circle one correct answers.

Photo
Gallery

