

# Plants Units



Grade 1 & 2

# Plants Unit

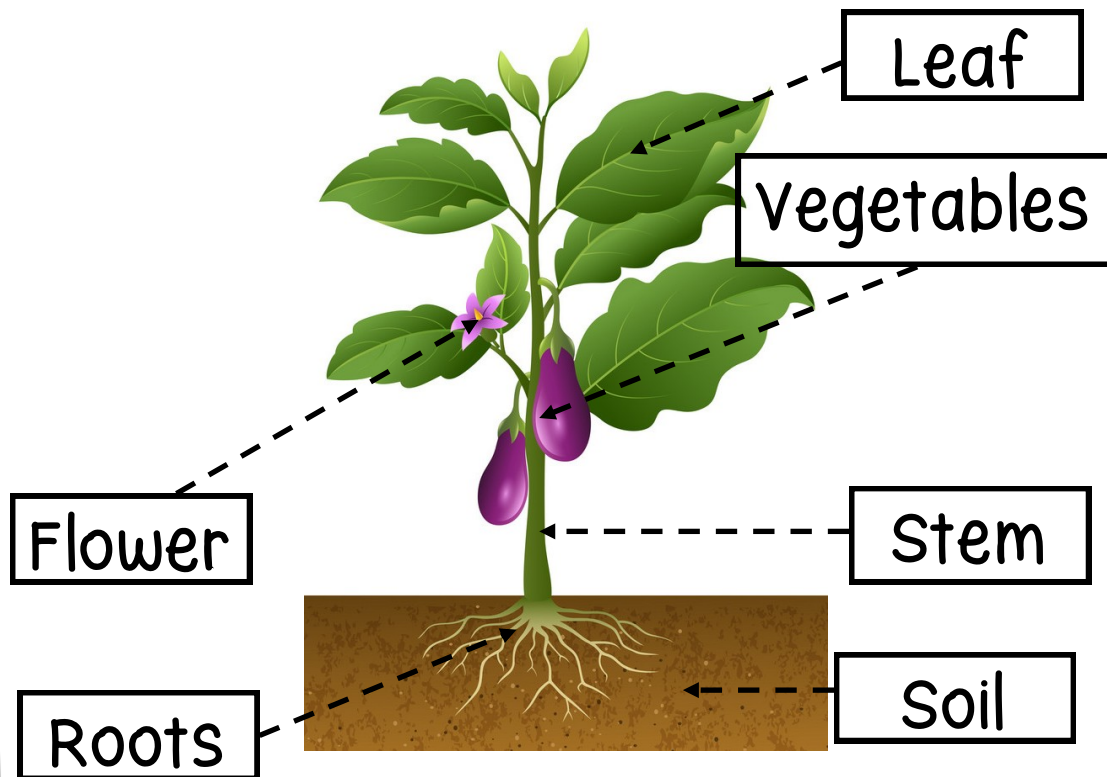
Grade 1 and 2 can learn about plants. Plants Unit is part of science. Students can learn about different types of flowers and other plants. How the flowers and plants grow.

## Worksheets

- Parts Of A Seed Page 4
- Parts Of A Plants Page 9
- Life Cycle Of A Flower Page 10
- What Do Plants Needs? Page 14-15
- Parts Of A Sunflower Page 16
- Tulip Flower Page 21
- Roses Page 23
- Flowers Page 25-26
- The Life Cycle Of Sunflower Page 28
- Life Cycle Of Pea Page 29
- Underground, Vines, Trees Page 30-31
- Flower Seed And Bulbs Page 32
- Parts Of A Tree Page 35
- My Plants Needs Page 36
- My Garden Page 37
- Stage of a life cycle Page 38
- Parts Of A Tulip flower Page 39
- About Trees, Plants, Flower, Plant and Flower Page 40-43
- Craft cut and paste Page 44-51
- Life Cycle Of An Apple Page 52
- Parts Of An Apple Page 53
- The Apple Tree Page 54
- Parts Of An Pumpkin Page 55
- Life Cycle Of An Pumpkin Page 56
- Pumpkin Page 57
- Labels The Pumpkin Page 60

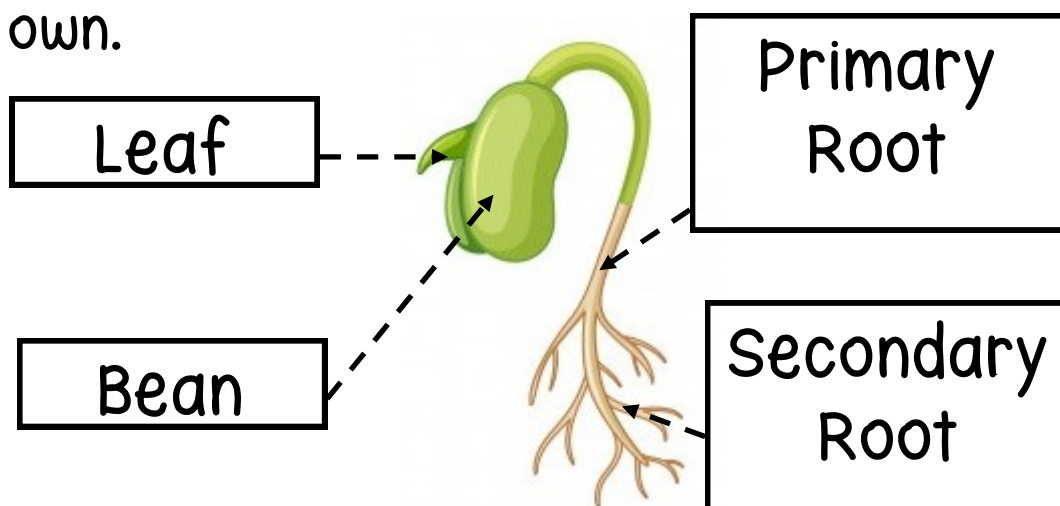
# Roots

Roots are the part of a plant that grows under the ground. Plants grow their roots in the soil. Water plants their roots down through the water. A few plants have roots that hang in the air. Roots help the plants in the ground. They keep the plant from blowing away or falling over and this helps keep the leaves facing the sky.



# Roots

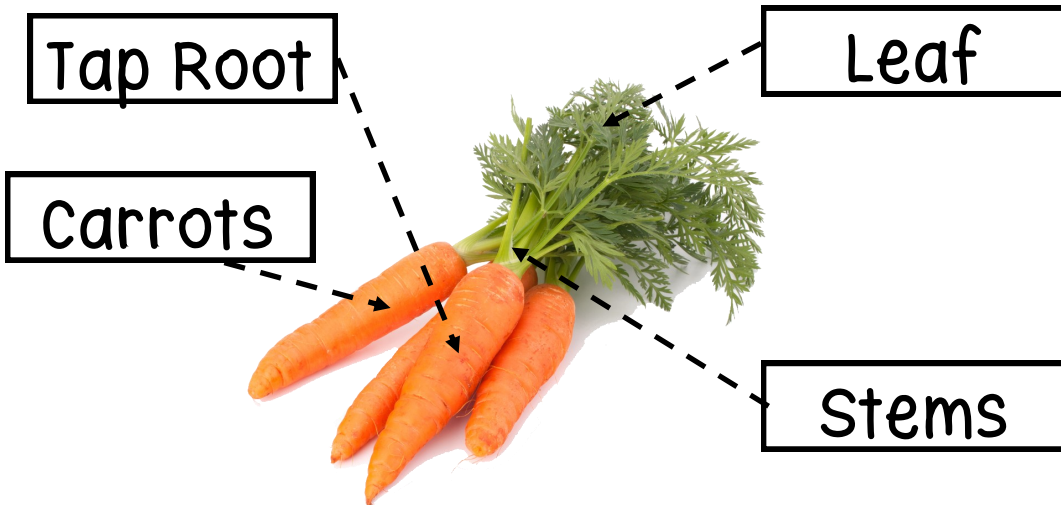
Roots are the part of a plant hardly ever see because they are nearly always under the ground. Roots grow from a single root and branch out below ground just like plants stem above the ground. Plants start to grow from seed, it sends down a single root into the ground. This root is called the primary root. The primary root is the thickest root. The primary root grows branches called secondary roots. Eventually, the secondary roots have branches of their own.



# Roots

Roots can be in many different shapes and sizes. Each plant has its own kind of root. Plants have one root bigger than all the other plants.

This root is called tap root because it grows straight down to tap. From deep in the ground many trees have taproots. When a tree starts life from a seed, the taproot is the first root to grow.

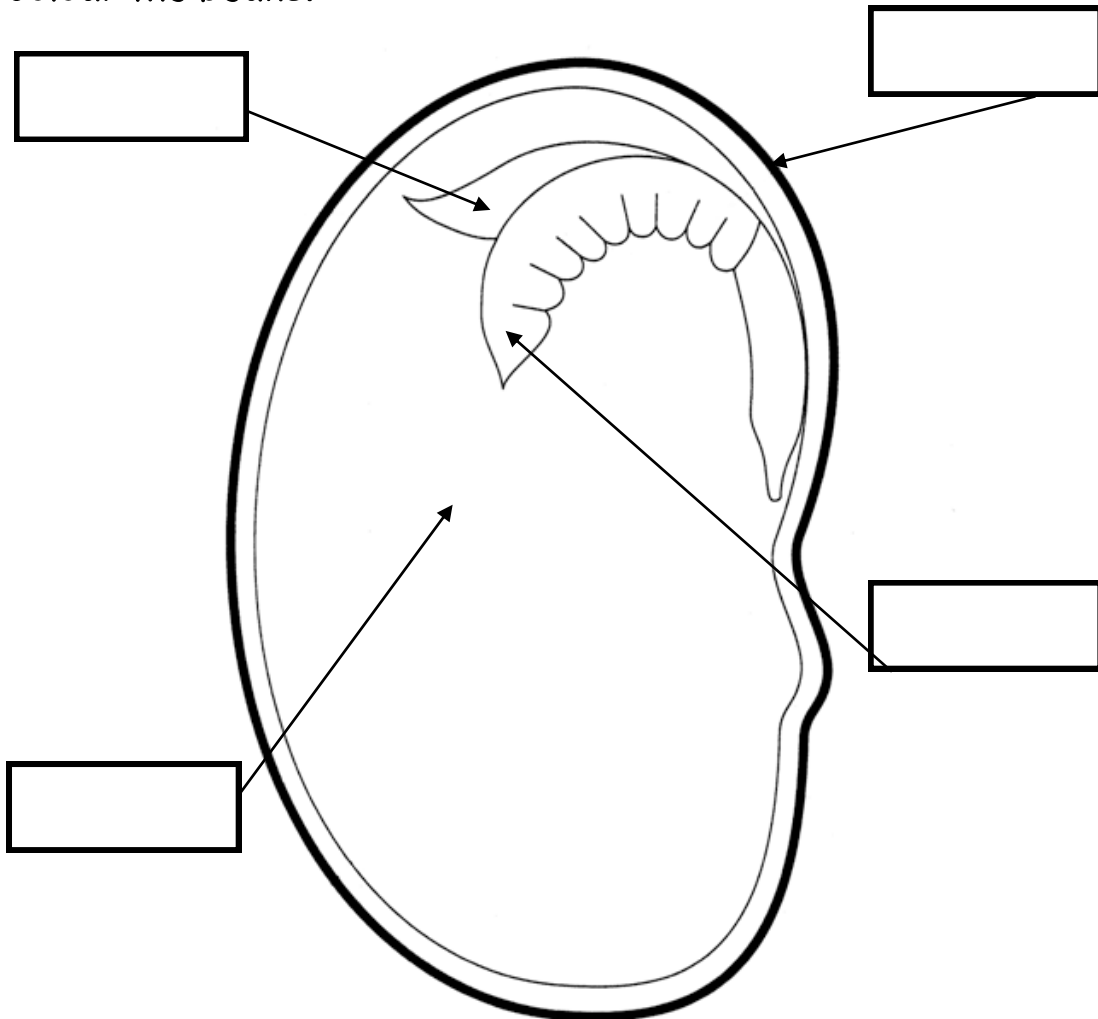


Some vegetables are just one big thick taproot. They grow in the underground with the leaves and stem poking up above.



# Part Of A Seed

Cut out the label and pasted them in the correct boxes.  
Colour the beans.



beans || root || leaves || seed coat

# Plants

Plants are living things. Most plants grow from the ground. Many plants produce flowers, fruits, and seeds. Plants come in many different shapes, sizes and, colour. Trees and shrubs are also plants.

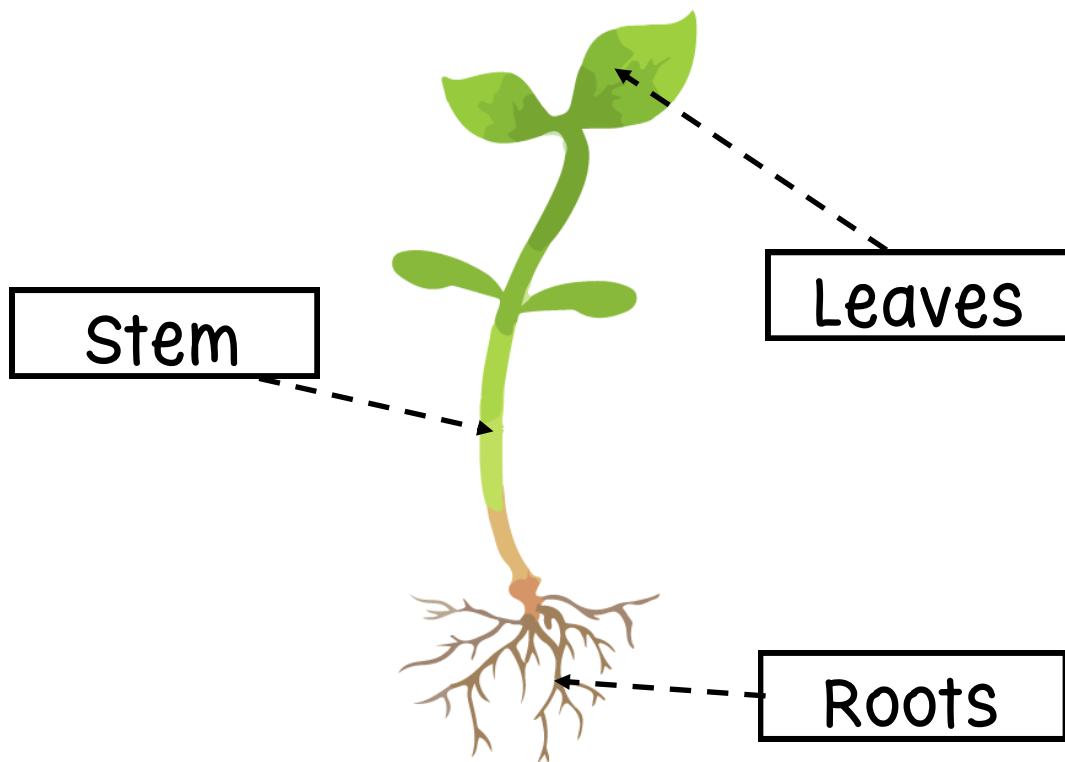
Flowers are usually brightly colour and some flowers attract birds and insects. The birds and insects pollinate flowers, which helps the plants to reproduce.



Some flowers have a sweet smell that attracts insects.

# Plants

Plants have roots, stems, and leaves. Most plants have roots that grow in the ground. The roots push down into the soil to hold the plants in place. Above the ground are the stem, leaves and, flowers.



The plant's stem carries food from the roots to the other parts of the plant. It also carries the leaves and sunlight.



# Plants

The plant's roots draw in water and give plants nutrients from the soil to feed the plant.

Roots

Soil is mix with roots when the plant grows



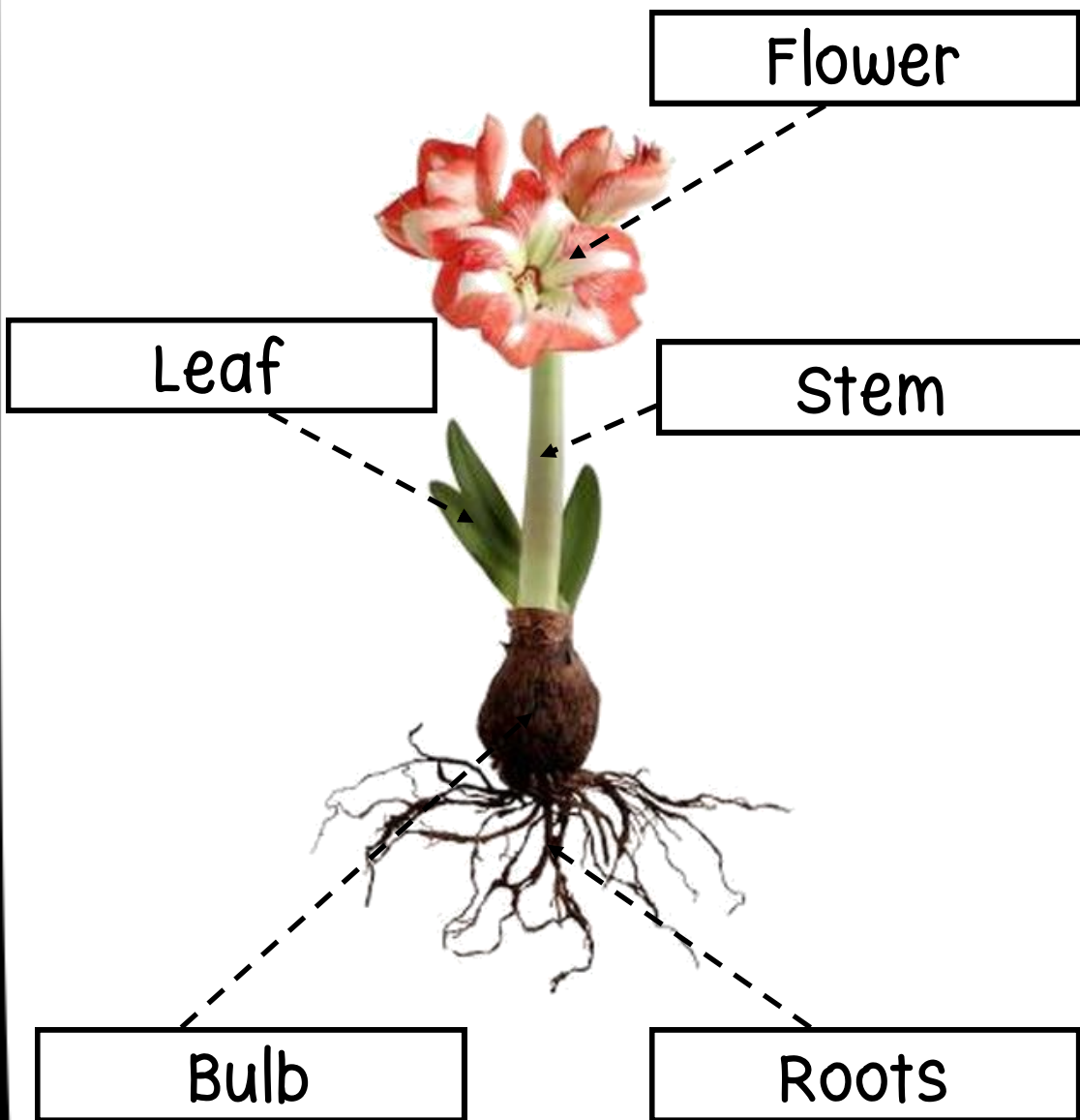
## Seeds and bulbs

Plants can make their food inside themselves. The plant's leaves use sunlight to make food for the plant.

Plants can grow from a seed or a bulb. A seed is very small and big.

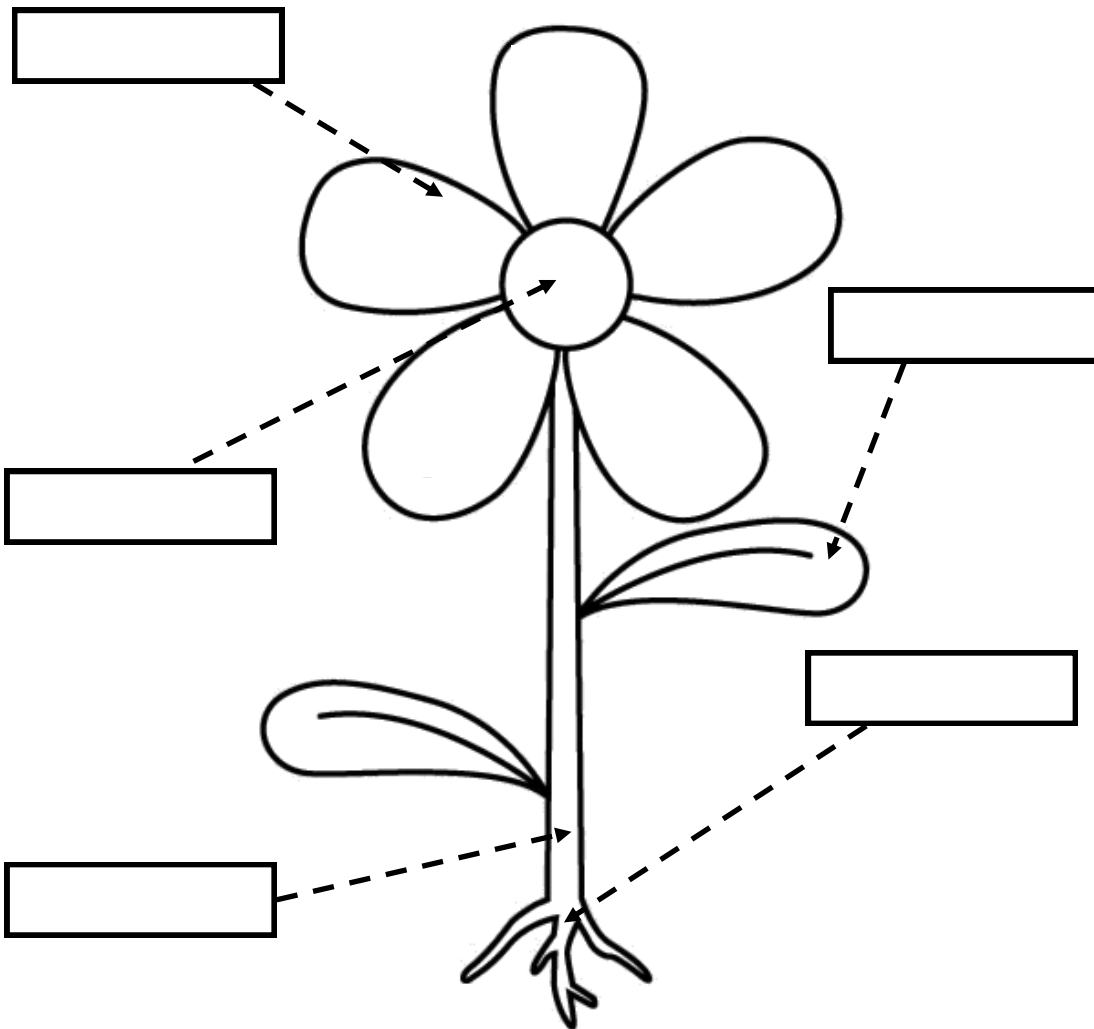
# Seeds and Bulbs

A bulb grows at the bottom of the plant under the ground. Summertime the plant stores food in the bulb.



# Parts Of A Plants

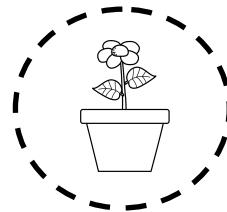
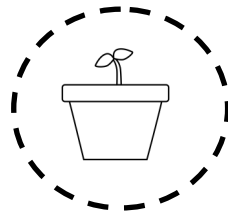
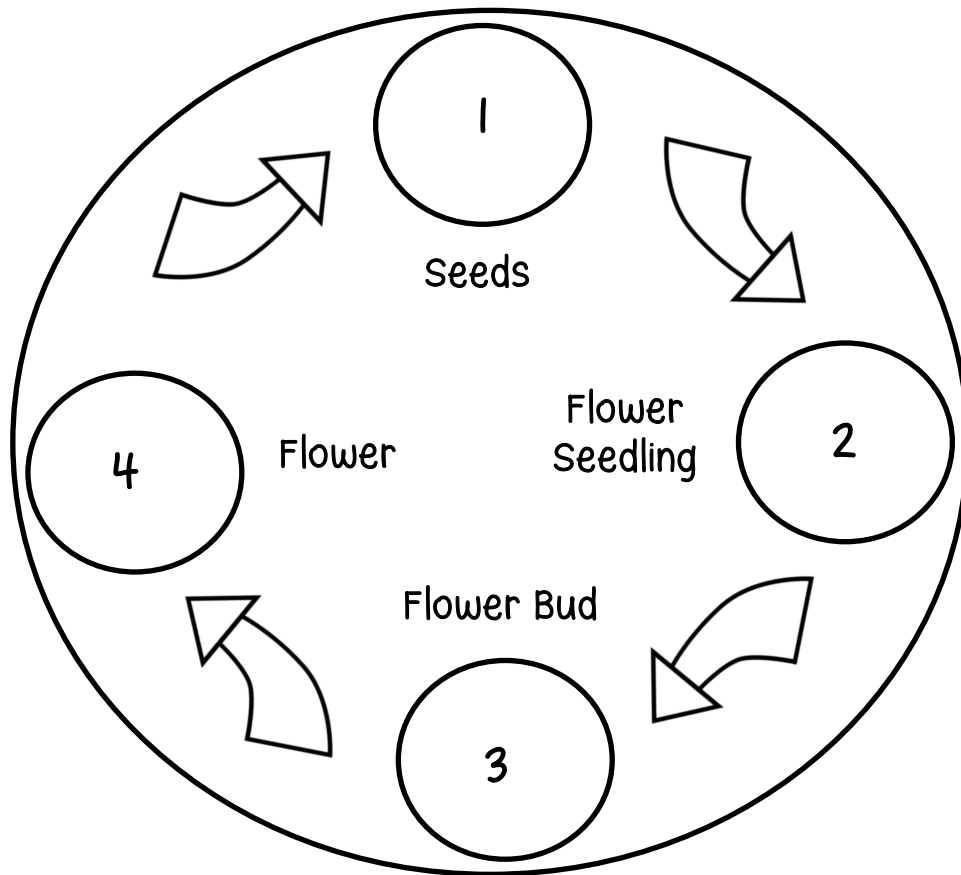
Cut out the label and paste them in the correct boxes.  
Colour the Flower.



Flower   Roots   Leaf   Stem

# Life Cycle Of A Flower

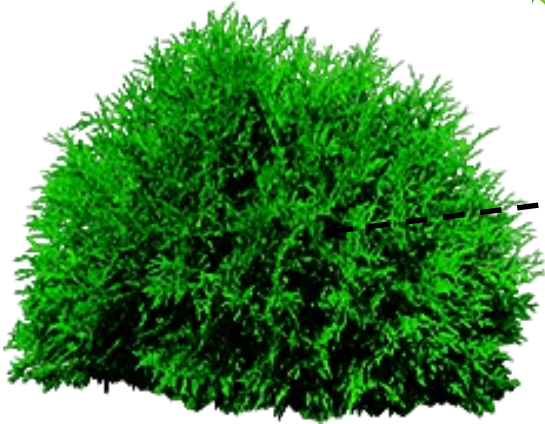
Cut out the label circle and paste them in the correct number circles and colour the picture.



# Plants

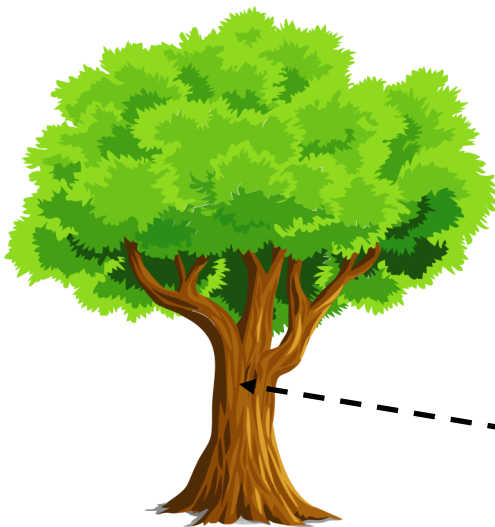
Plants are living things that produce their food. They include grasses, bushes, vines, and trees.

Grasses



Bushes

Vines



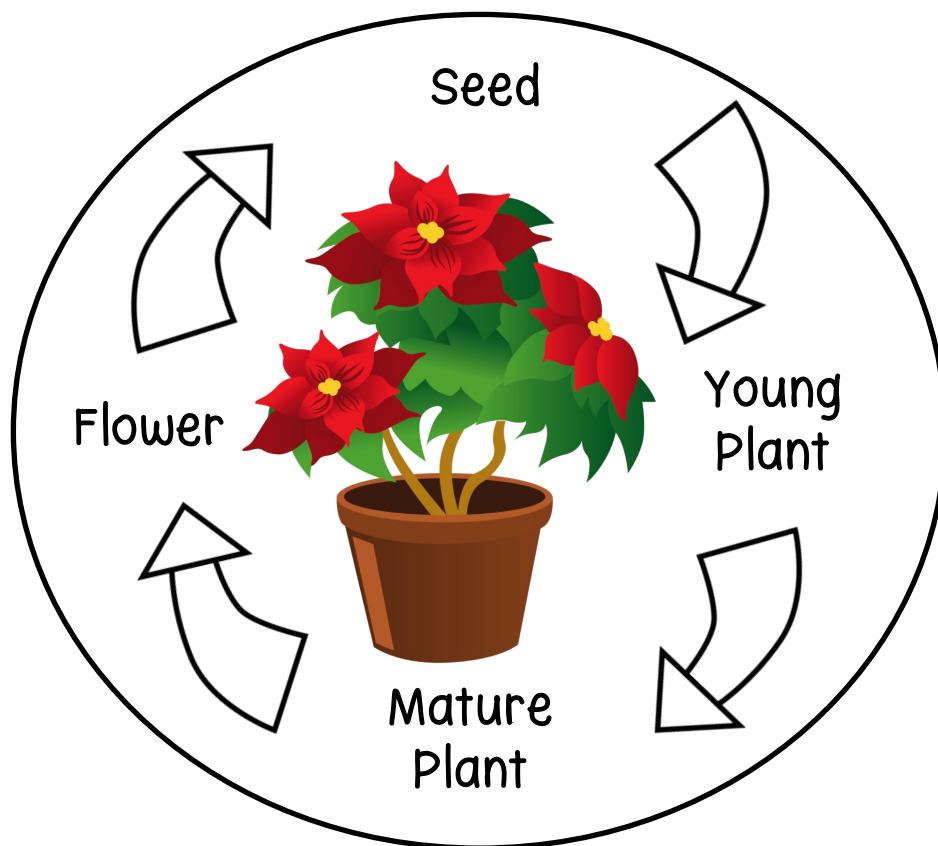
Trees



# Young Plants

The plant life cycle shows the different stages in the life of a plant.

Different plants have very different life cycles. How long it takes a plant to complete each stage.



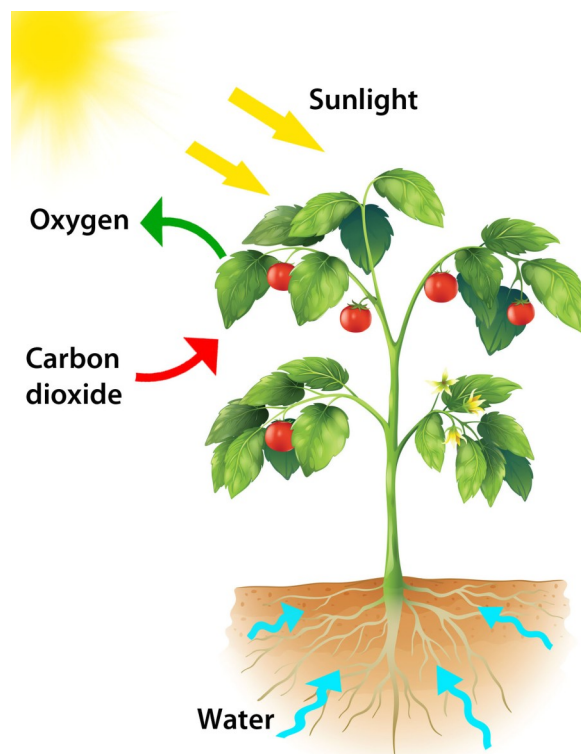
# Young Plants

A seedling grows bigger to become young plants in the next stage of a plant life cycle. A young plant grows if it gets enough food and water.

## Food for growing plants

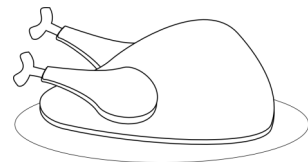
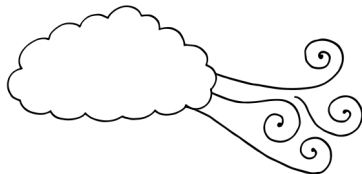
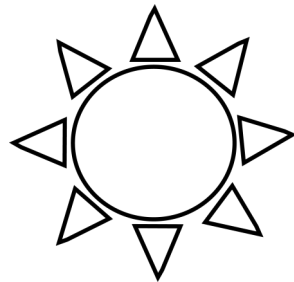
Once a plant grows leaves and roots, it can make food using sunlight and air. The roots of the young plant take up water from the soil.

Plant make their own food using energy from the sun.



# What Do Plants Need?

Circle 4 things that plants need to grow.  
Colour the picture.



# What Do Plants Need?

Cut out the label and paste them in the correct boxes.  
colour the flower and write the words below.

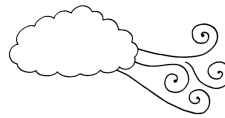
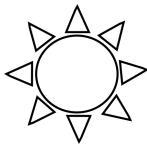
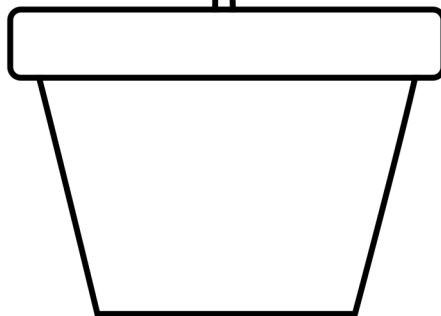
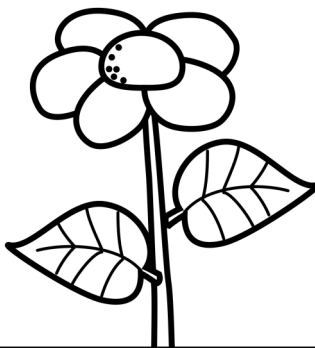
## Words Bank

Water

Sun

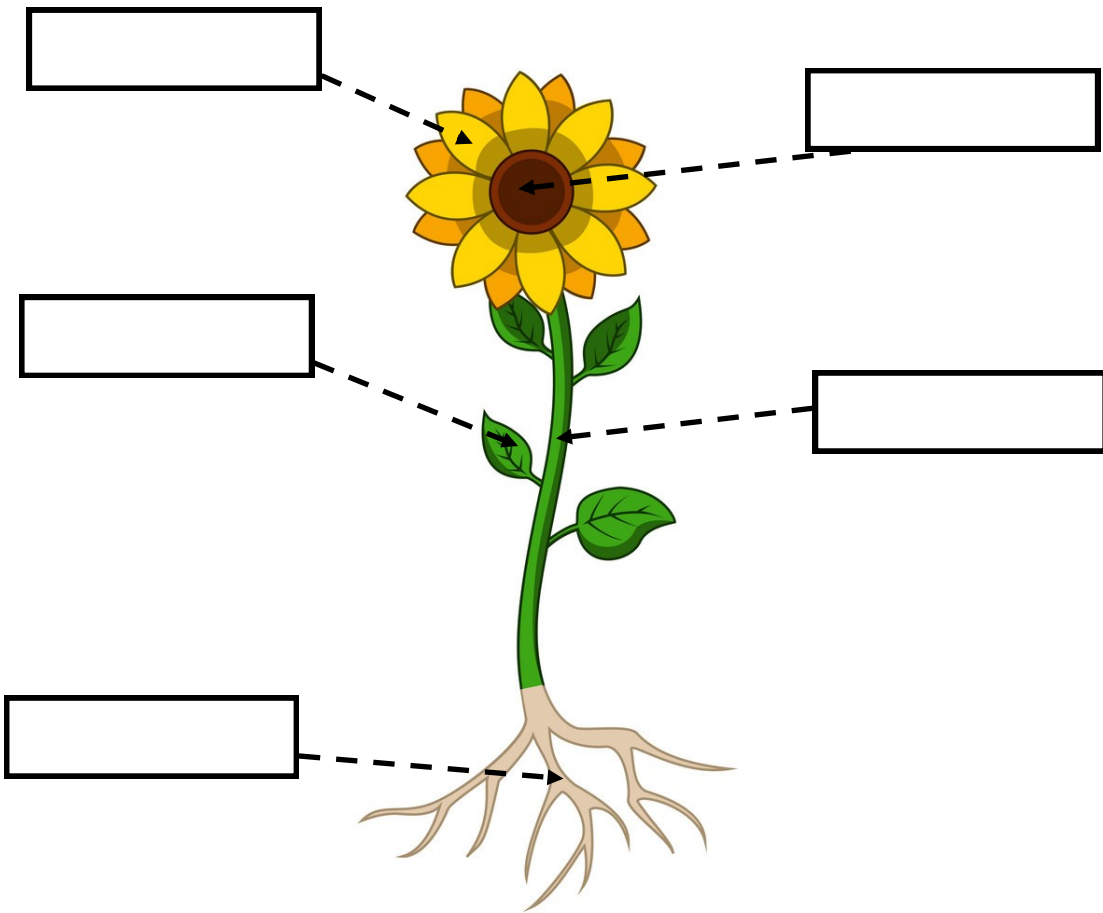
Air

Soil



# Parts Of A Sunflower

Cut out the label and paste them in the correct boxes.  
Draw a soil on the sunflower roots below.

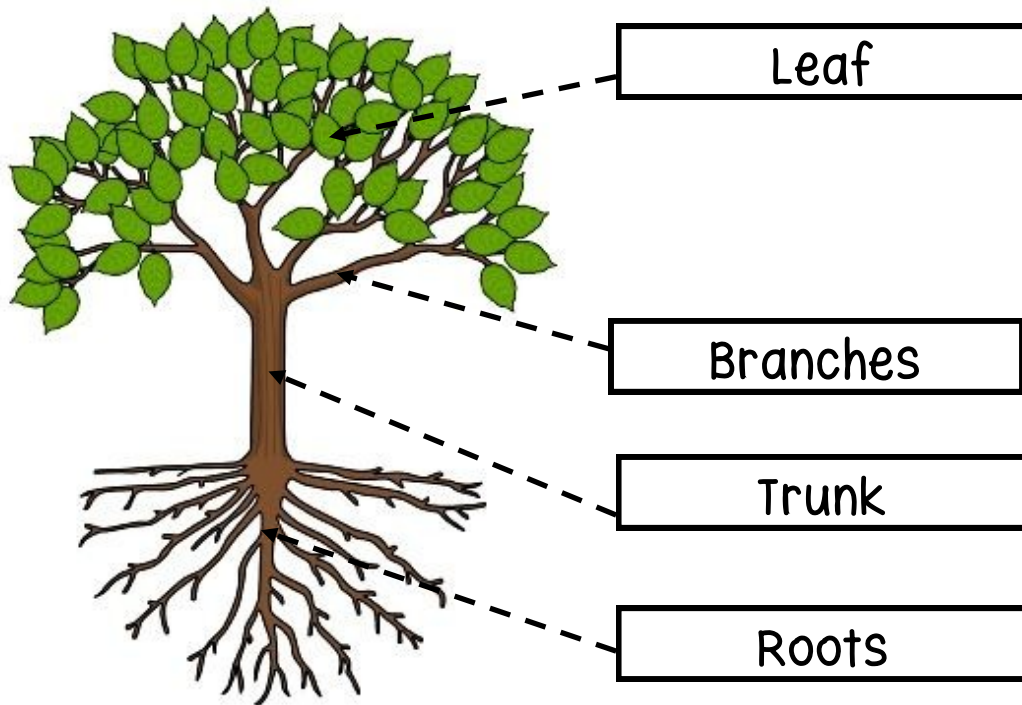


Flower    Seeds    Roots  
Stem    Leaf



# Parts Of Young Plant

Most plants have the same basic parts.



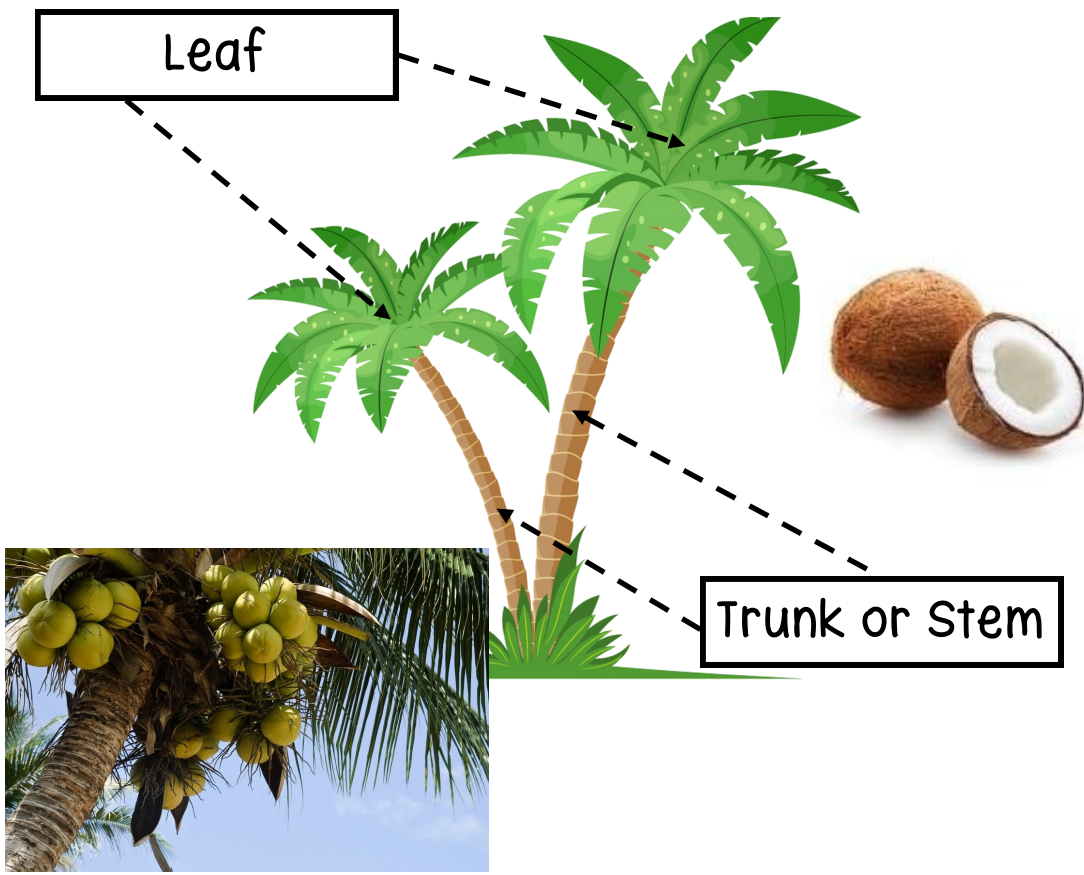
- Roots, which hold the plant in the soil and take up water and nutrients.
- Leaves, which produce food for the plant.
- The trunk, branches, and stems are connecting all the parts.

# Palm Tree

The fruits of a palm tree are called coconuts.

Coconuts grow on a palm tree. The coconuts grow in bunches under the palm tree's leaves. When the coconuts are ripe, they fall to the ground.

Coconut palm often grows on beaches.



# Palm Tree

Also, Dates grows on the palm tree too.



The dates grow in bunches under the palm tree's leaves.

## Stems

The stem or stalk is the tall, thin stick of a plant. It holds up all the leaves and flowers.

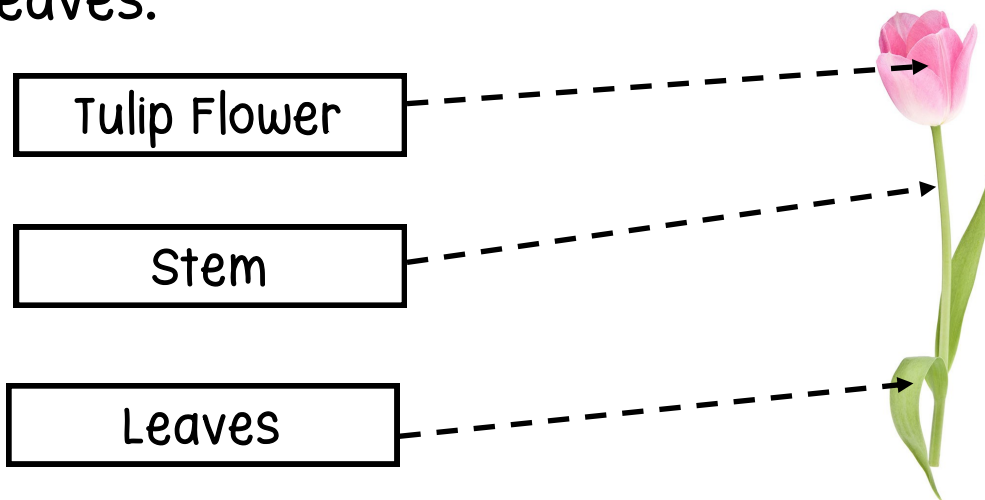


# Stems

The plant grows, its stem usually gets taller and taller. As the stem grows upward.

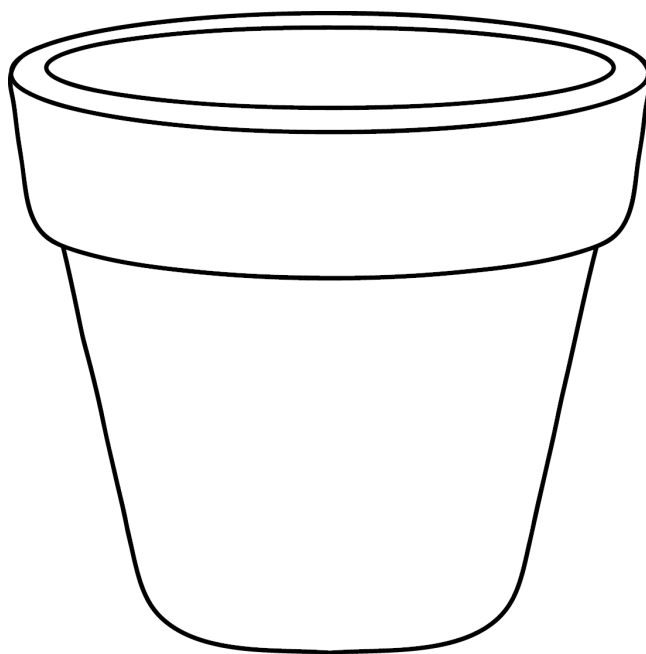
Stem are lots of tiny pipes. The pipes carry water, food, and nutrients up and down between the plant's leaves and roots. There are two kinds of pipes.

Thin pipes carry water up from the roots and thicker pipes carry food made in the leaves.



# Tulip Flower

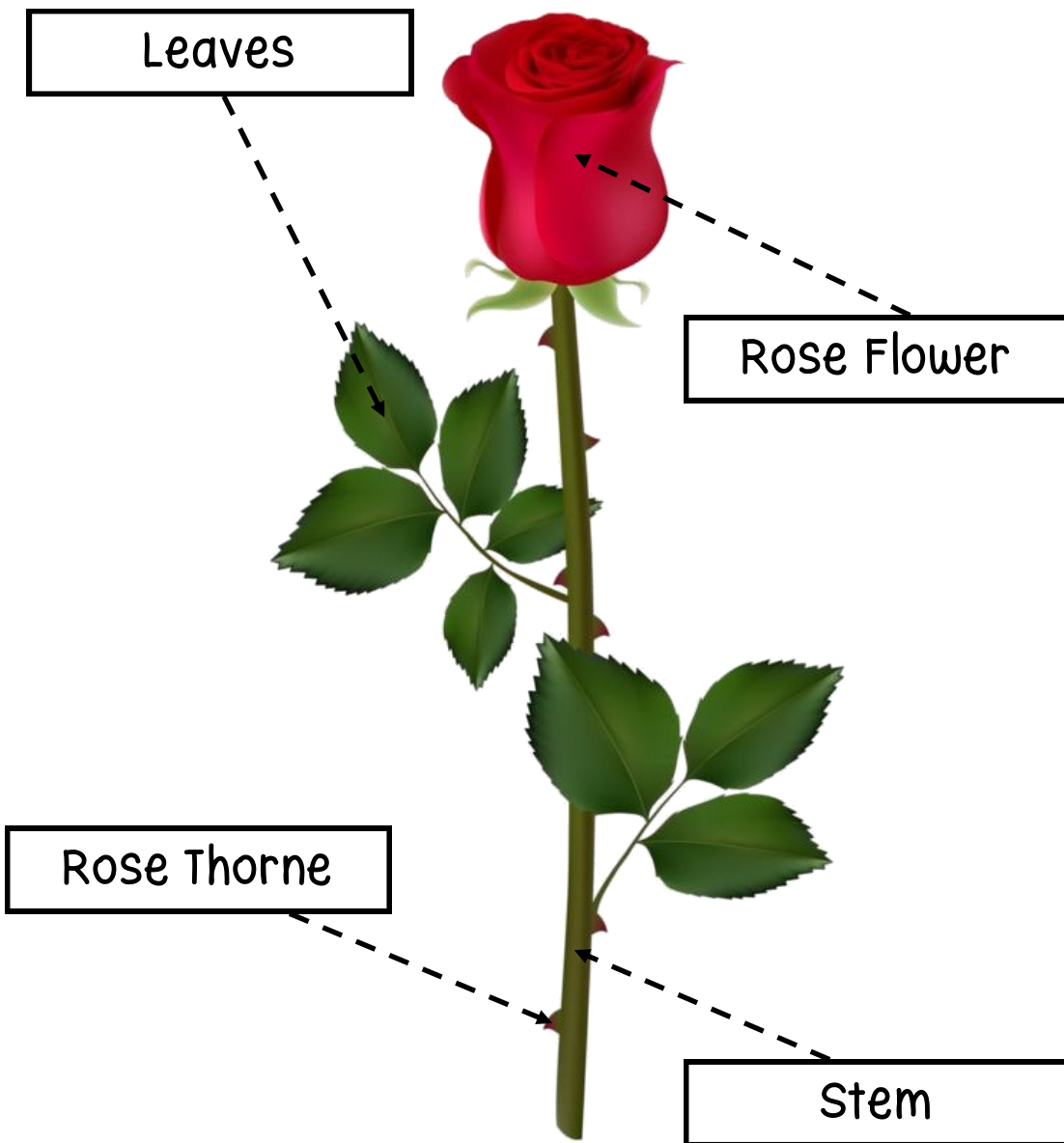
Draw 5 tulip flowers in the flower pot using  
1 red, 1 blue, 1 pink, 1 yellow, 1 purple, 1 orange.





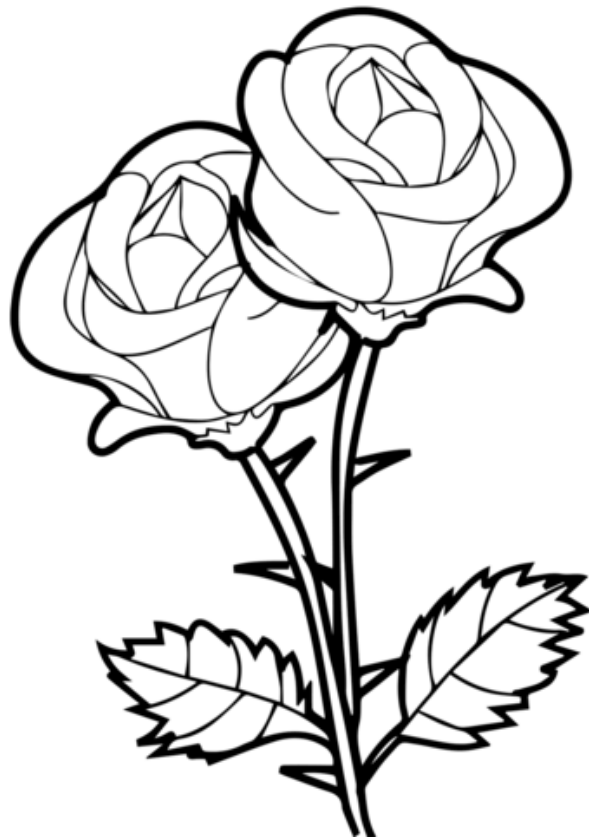
# Rose Thorns Stem

Roses are pretty flowers but their stems can have very sharp pointing thorns.



# Rose

Draw flower pot under the rose and colour the rose red, leaves and stem green, point thorns brown.



# What Is A Flower?

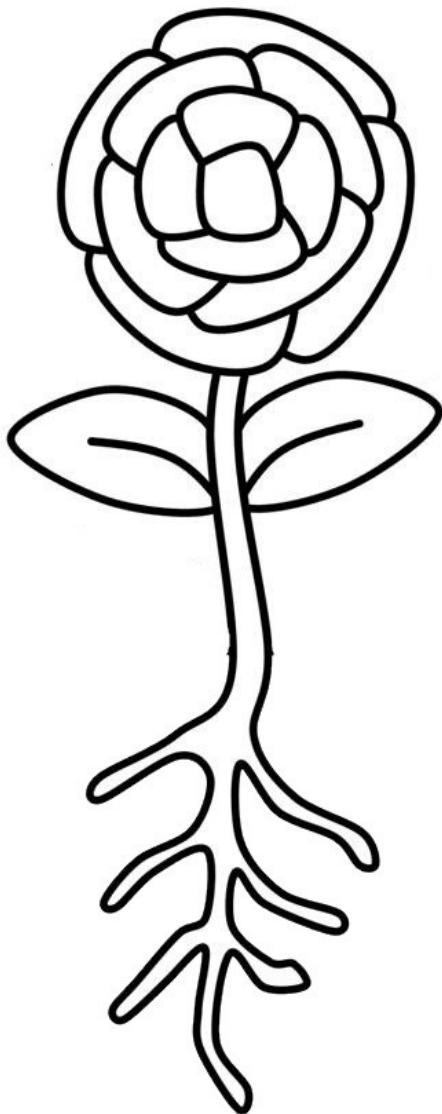
The flower is part of a flowering plant. Flower plant is living things. Plants make their own food from air, light, and water. Also, flower plants make seeds. Flowers come in many different colours.



# Flower

Draw a line to match the correct parts of the flower.

Colour the flower.



Stem

Roots

Flowers

Leaves

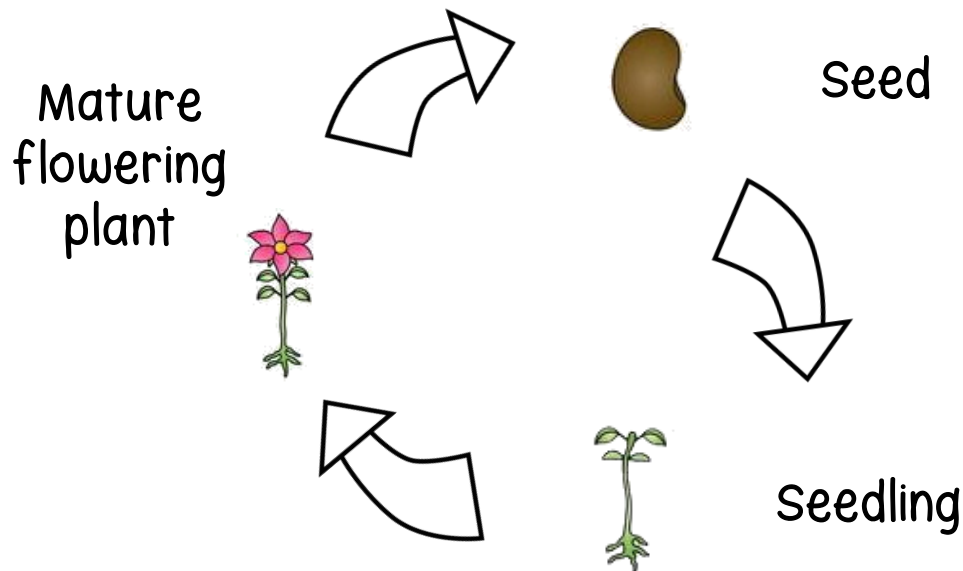
# Flower

Draw flower, stem, leaves, roots, soil.  
Colour the picture.



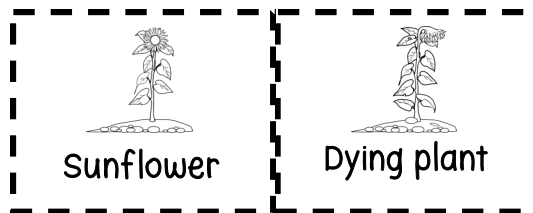
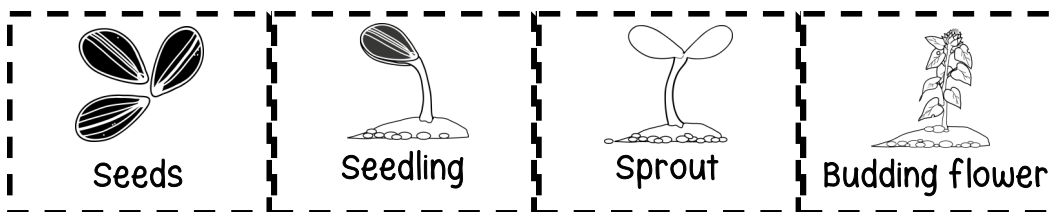
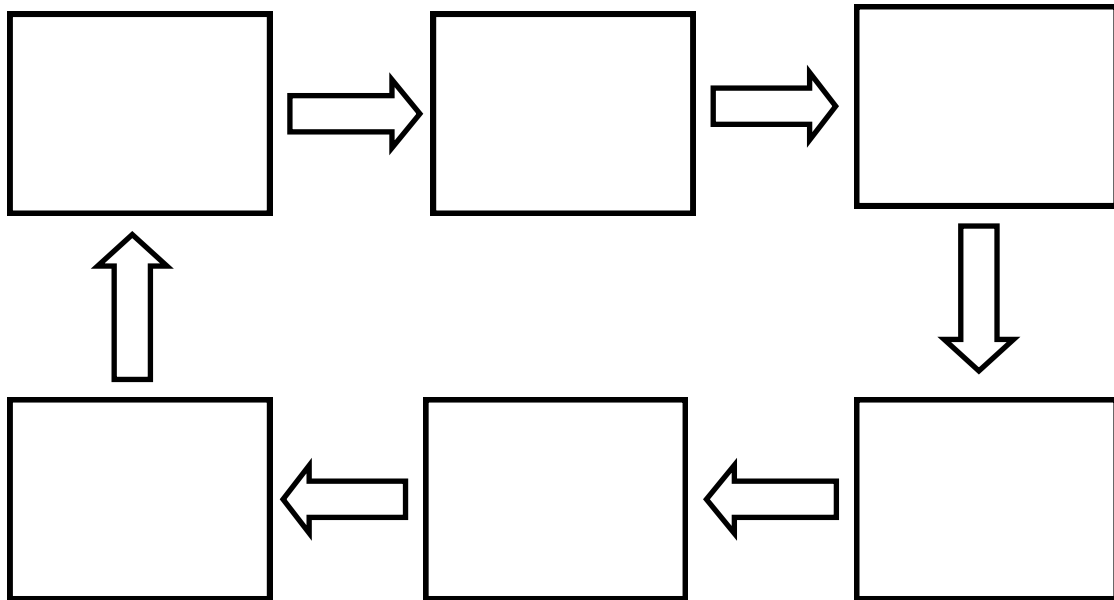
# Flowering Plant's Life Cycle

Living things go through changes called a life cycle. The flowering plant's life cycle begins inside a seed. The seed starts to grow as the seed begins to grow small seed leaves appear above the soils. the seed leaves make and store food for growing seedling. The seedling grows a bud and slowly opens. Leaves or adult leaves, start to grow, and the seed leaves fall off. The flower is now mature and can make seeds. Seeds will become new flowering plants.



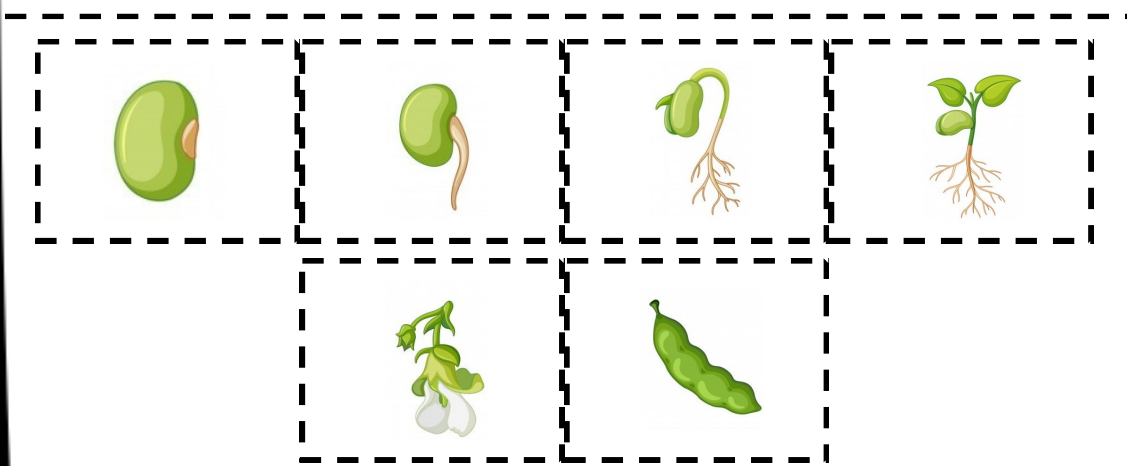
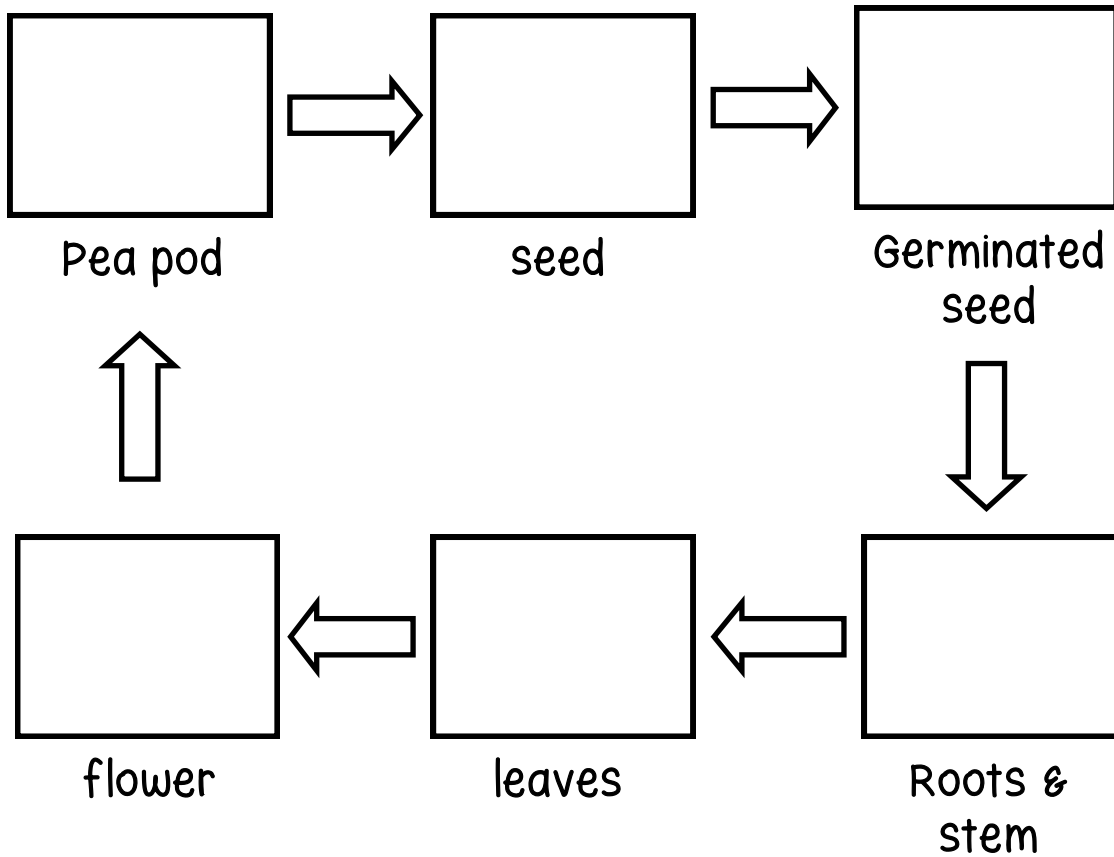
# The Life Cycle Of Sunflower

Cut out the label and paste them in the correct boxes and colour the picture.



# Life Cycle Of Pea

Cut out the label and paste them in the correct boxes.



# Underground, Vines, Trees

1. Which fruits grow on a palm tree?

Chose the correct answers.

Word Bank

Apples  
Coconut  
Pears  
Dates

\_\_\_\_\_

2. Which fruits that grow on a tree?

Chose the correct answers.

Word Bank

Apples  
Coconut  
Pears  
Dates  
Peaches  
Sunflower  
Lemon  
Potato  
Orange  
Cherry

\_\_\_\_\_  
\_\_\_\_\_  
\_\_\_\_\_

3. Which vegetables that grow underground?

Chose the correct answers.

Word Bank

Potato  
Turnip  
Blackberry  
Carrot  
Onion

\_\_\_\_\_  
\_\_\_\_\_

# Underground, Vines, Trees

4. Which fruits and vegetables grow on vines?

Chose the correct answers.

\_\_\_\_\_

\_\_\_\_\_

\_\_\_\_\_

\_\_\_\_\_

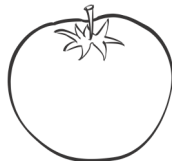
\_\_\_\_\_

## Word Bank

Pumpkin  
Tomatoes  
Pears  
Apples  
Watermelon  
Eggs  
Squash  
Kiwi  
Eggplant  
Grapes

5. Circle the fruits and vegetables grow underground, vines, and trees

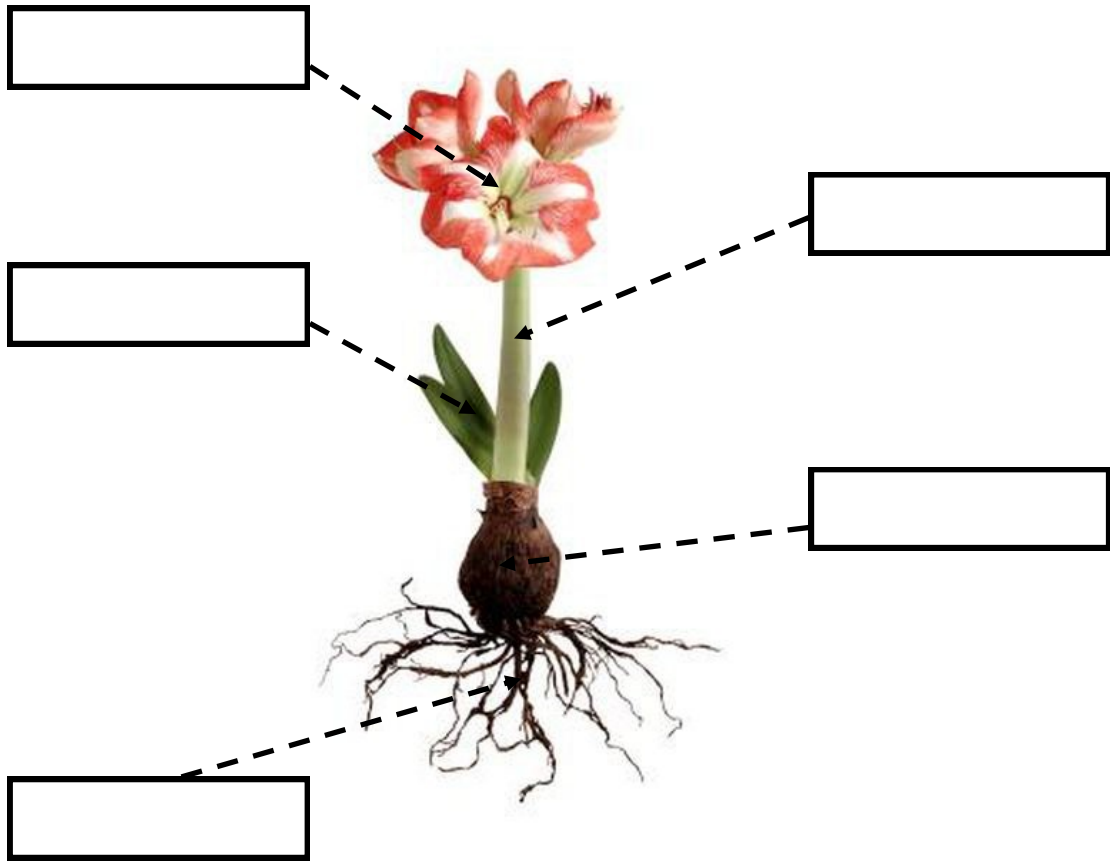
Circle the correct fruits and vegetables colour the picture.





# Flower Seeds And Bulbs

Cut out the label and paste them in the correct boxes.



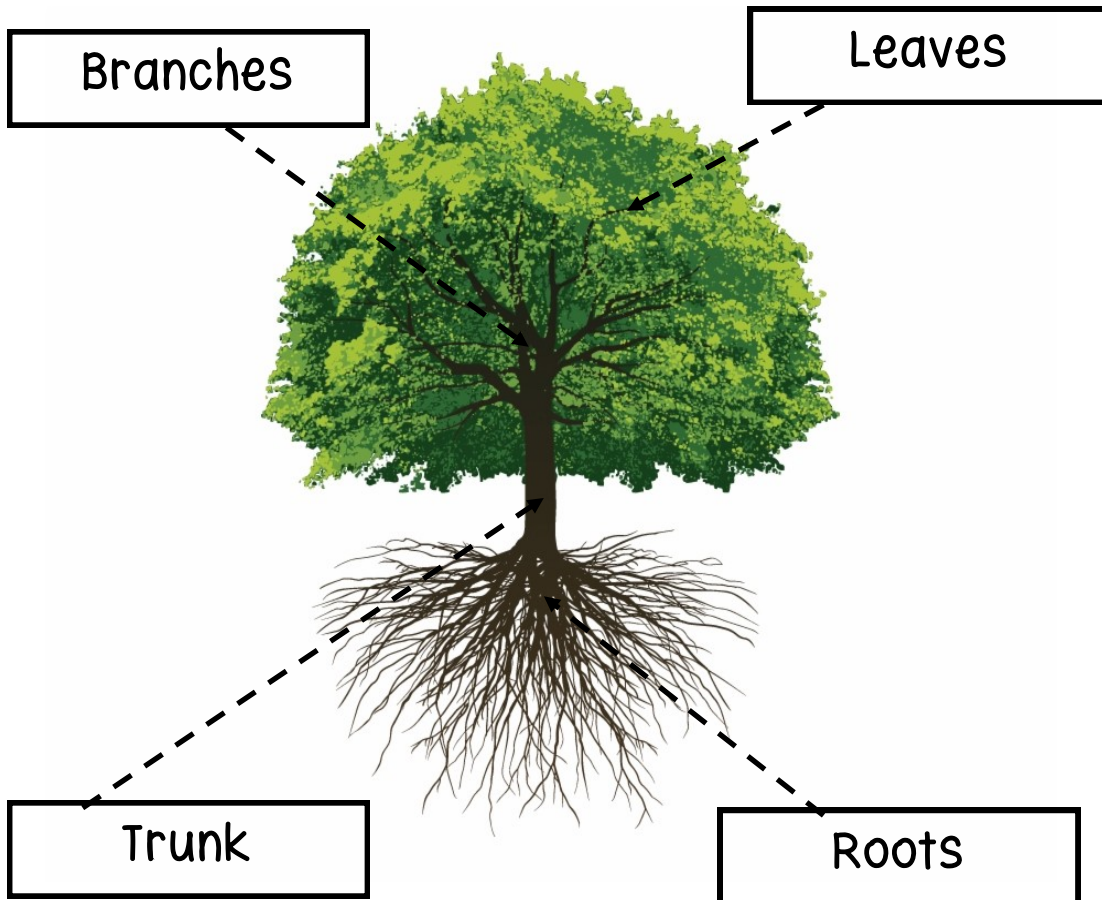
Flower      Roots      Stem

Leaf      Bulb

# Trees

The tree is a type of plant. The tree has thick trunks, and branches covered dark green leaves. Trees also have roots which grow down into the ground and take in nutrients from the soil.

A single tree can have many roots.



# Life As A Tree

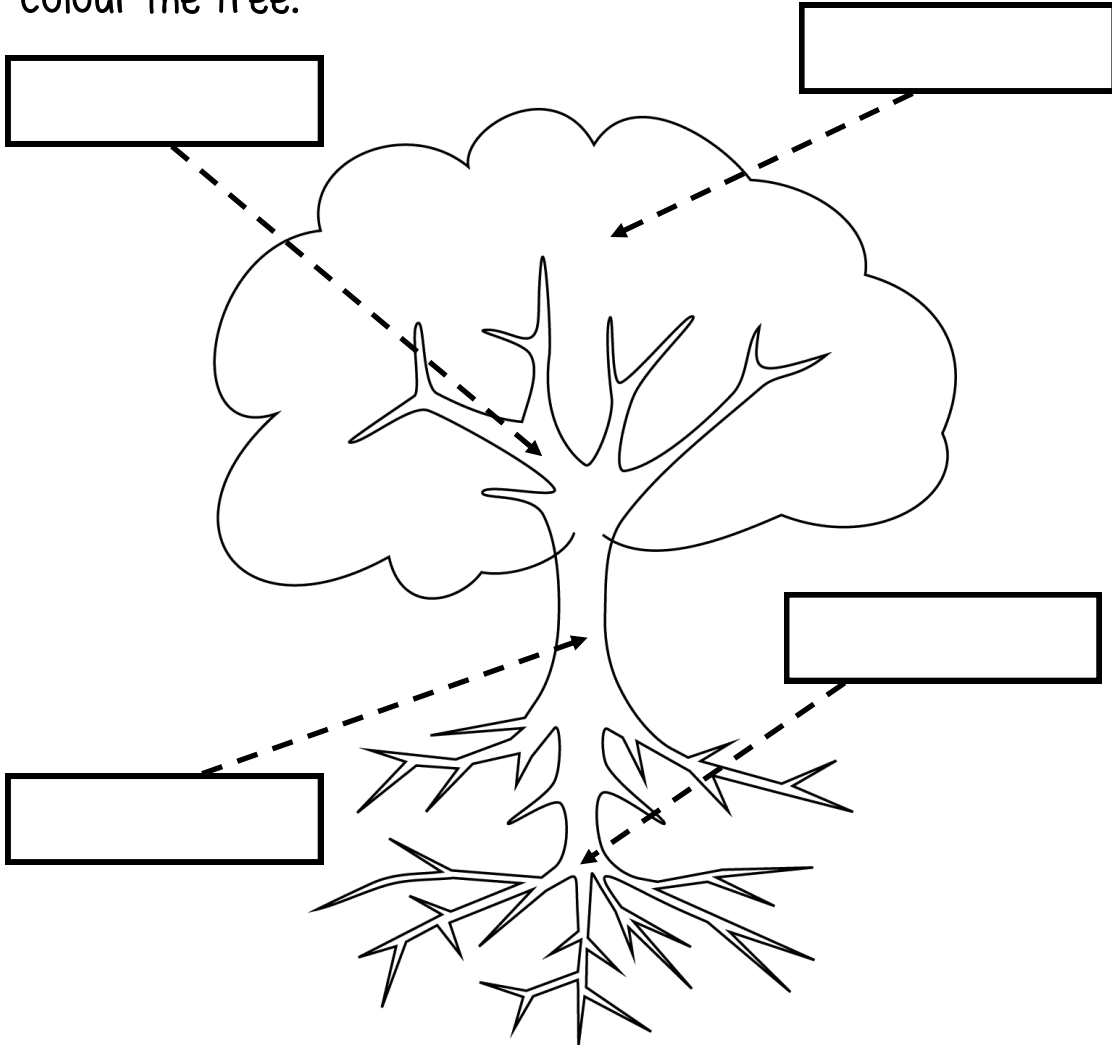
All trees need water, sunlight, and nutrients from the soil to make food and keep trees growing. Trees need the right kind of weather, too. Some trees like the cold weather and some trees like hot, tropical weather.

Evergreen trees are trees with leaves that stay green all year round. Trees have leaves that change colour brown, golden, or red in the autumn, and fall off.



# Parts Of A Tree

Cut out the label and paste them in the correct boxes.  
Colour the Tree.



Leaves

Roots

Branches

Trunk

# My Plant Needs

Draw Sunshine, Soil and Water and colour the flower.





# My Garden

Write the blank boxes below to describe how to plant a garden.

First,



Next,

Two large rectangular boxes with dashed borders, each containing several horizontal lines for writing. The boxes are separated by a vertical dashed line that passes through the center of the flower icon above.

Then,



Last,

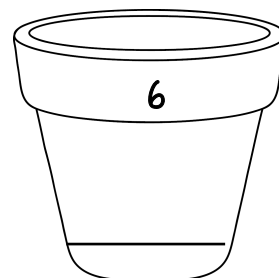
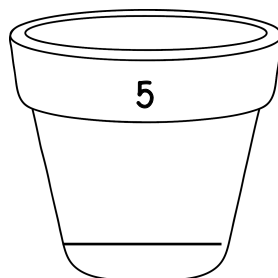
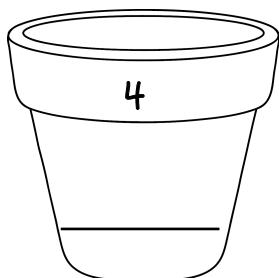
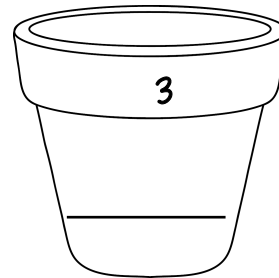
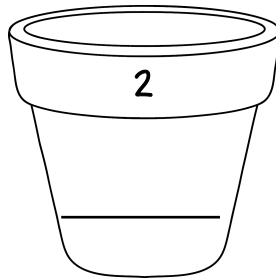
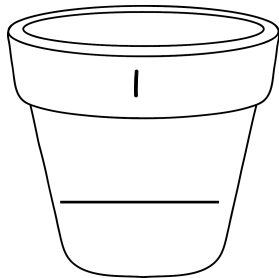
Two large rectangular boxes with dashed borders, each containing several horizontal lines for writing. The boxes are separated by a vertical dashed line that passes through the center of the flower icon above.

# Stage Of A Life Cycle

Draw a stage of the life cycle in the flower pot.  
Write the life cycle stage in the flower pot.  
Colour the flower pots.

Word bank

Soil  
Flower Bud  
Seeds  
Flower  
Sprout  
Seedling



# Parts Of A Tulip Flower

Write the words in the correct boxes.

Word bank

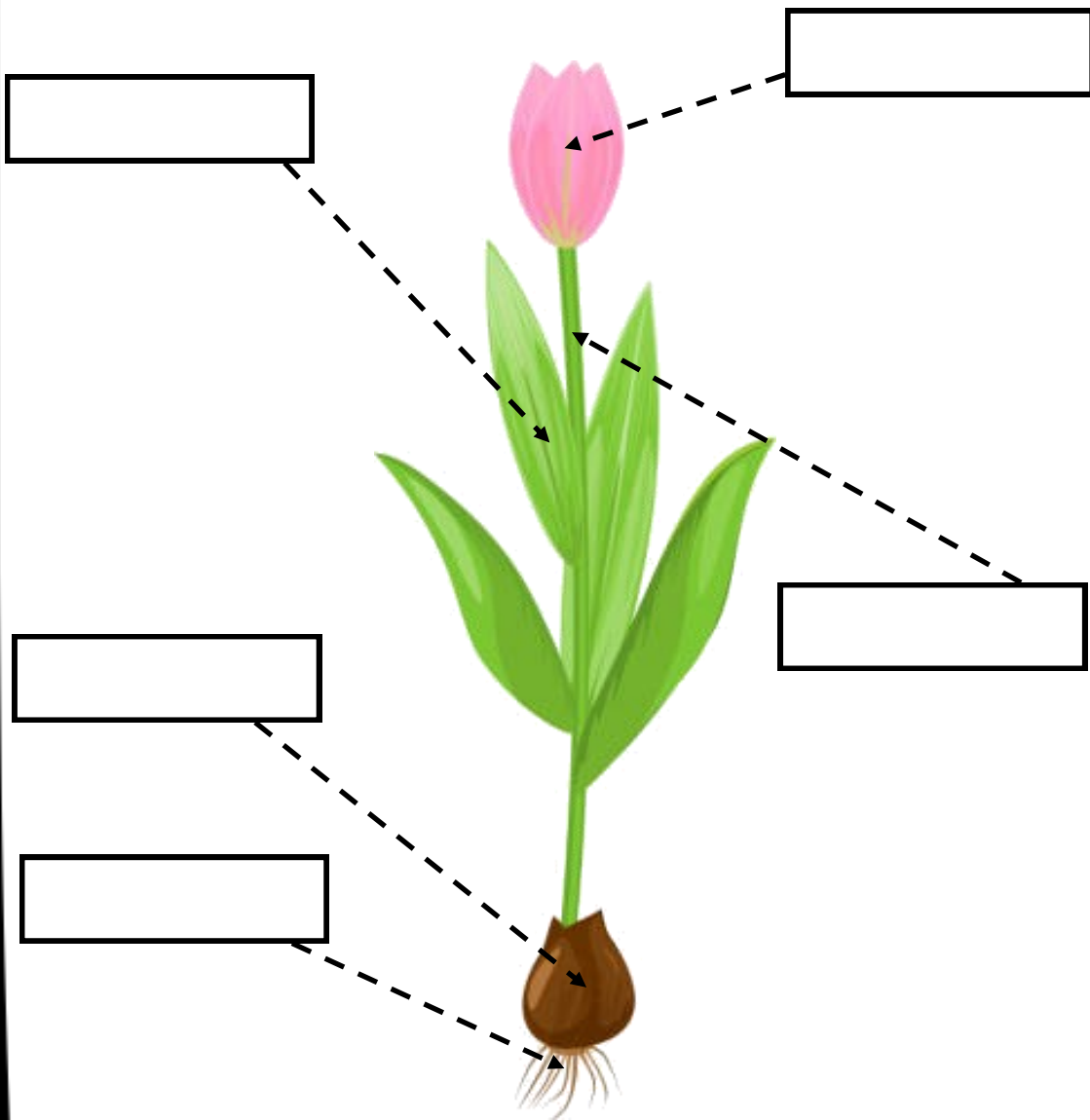
Flower

Bulb

Roots

Leaf

Stem



# About Trees

Write the missing words to fill in the blank line.

Word bank

trees    branches    roots    trunk    stem    straight  
fruits

Tall, big and strong plants are called

\_\_\_\_\_.

Tree have many \_\_\_\_\_.

Tree have big \_\_\_\_\_.

Tree stand \_\_\_\_\_.

Tree have strong \_\_\_\_\_.

The stem of a tree called the \_\_\_\_\_.

Trees give us \_\_\_\_\_.

Name 4 different types of trees.

\_\_\_\_\_    \_\_\_\_\_  
\_\_\_\_\_    \_\_\_\_\_

# About Plants

Write the missing words to fill in the blank line.

Word bank

seed

Roots

Soil

stem

Leaves

All plants start from a \_\_\_\_\_.

\_\_\_\_\_ absorb the water from the  
\_\_\_\_\_.

The \_\_\_\_\_ is the upper part of the  
plant.

\_\_\_\_\_ make food for the plant.

Name 4 different types of flowers.

\_\_\_\_\_  
\_\_\_\_\_



# About Flower

Write the missing words to fill in the blank line.

word bank

seeds

roots

soil

stem

leaves

fruits

straight

Flowers have many \_\_\_\_\_.

Flowers have small thin \_\_\_\_\_.

Flowers stand \_\_\_\_\_.

Flowers have a strong \_\_\_\_\_.

Flowers roots grow in the \_\_\_\_\_.

Flowers give us \_\_\_\_\_  
and \_\_\_\_\_.



# Plant And Flower

Write the missing words to fill in the blank line.

Word bank

Seed      Roots      Flower      Stem      Leaves  
Life cycle      Seedling      Colours

\_\_\_\_\_ part of the plant that makes the seeds or the fruit.

\_\_\_\_\_ a part of the plant that can make a new plant.

\_\_\_\_\_ a very young plant.

\_\_\_\_\_ lives, grows, dies.

\_\_\_\_\_ Bottom of the plant that takes water from the soil.

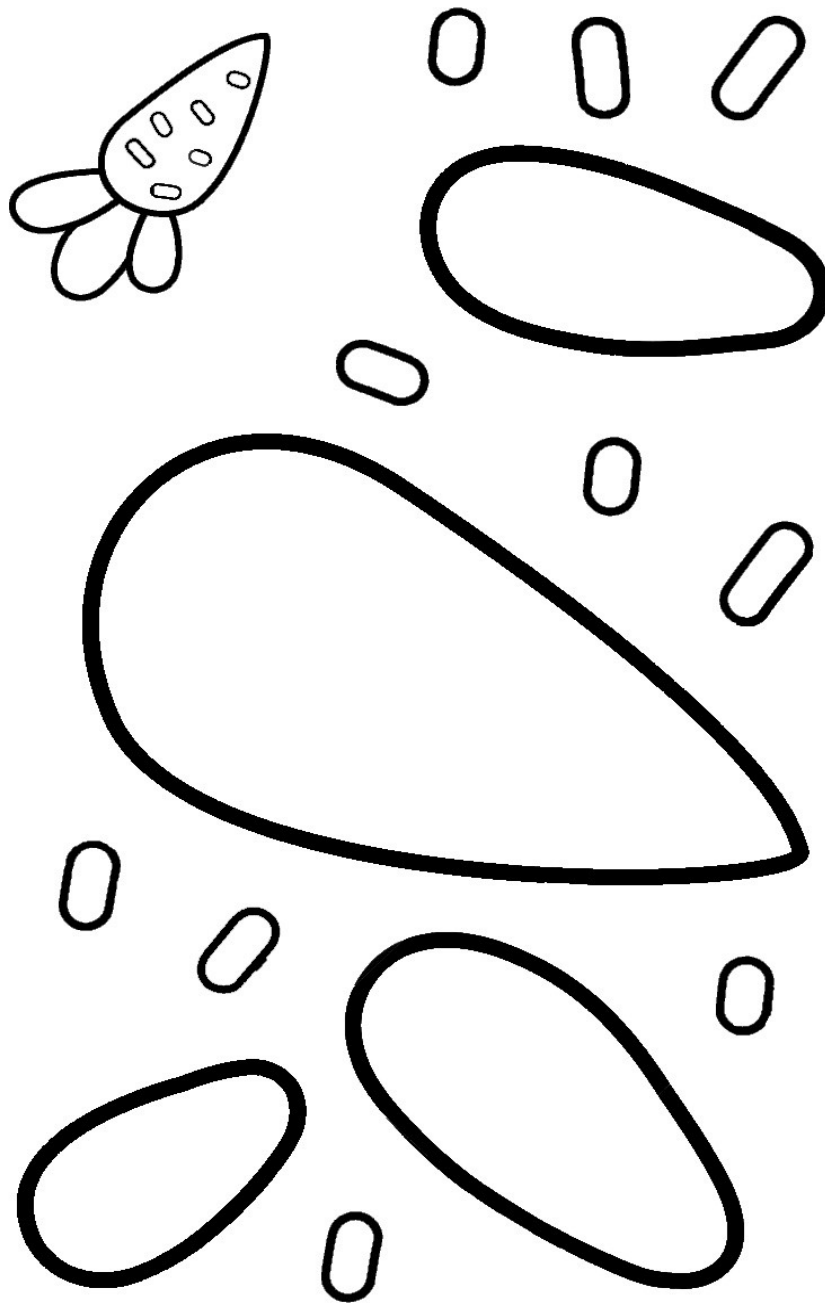
\_\_\_\_\_ Holds up the plant.

\_\_\_\_\_ Use light to make food for the plant.

Flowers has many different \_\_\_\_\_.

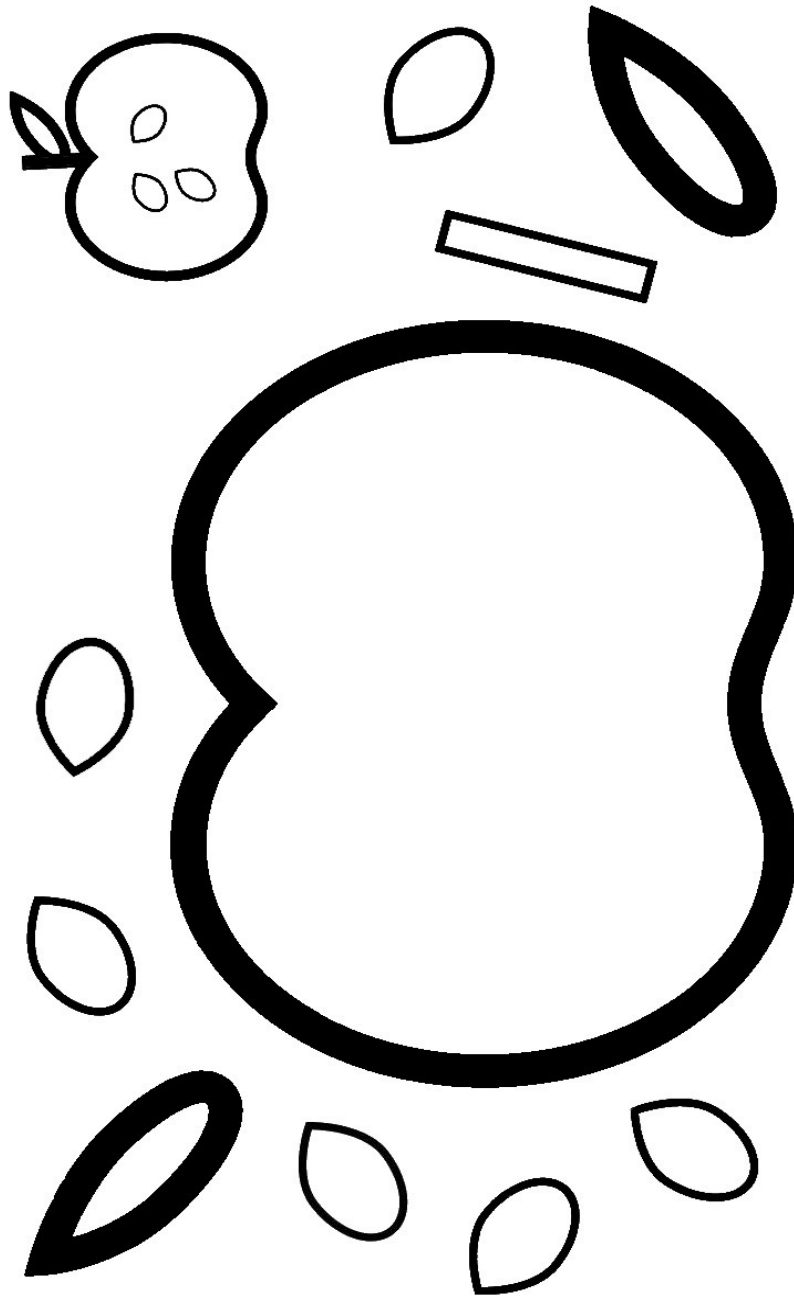
# Carrot Craft

cut out all the pieces and glue it together.  
colour the carrot.



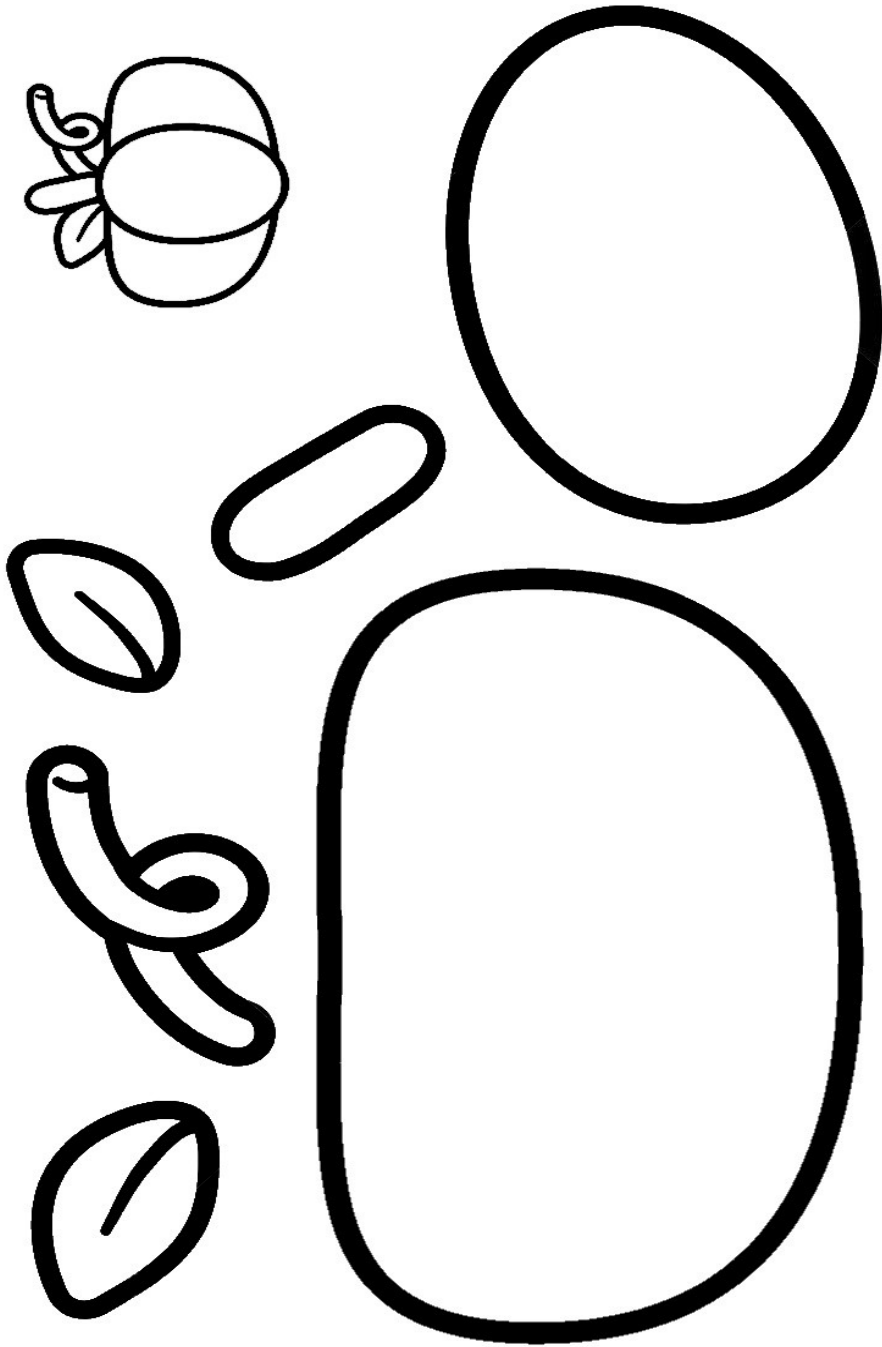
# Apple Craft

Cut out all the pieces and glue it together.  
Colour the apple.



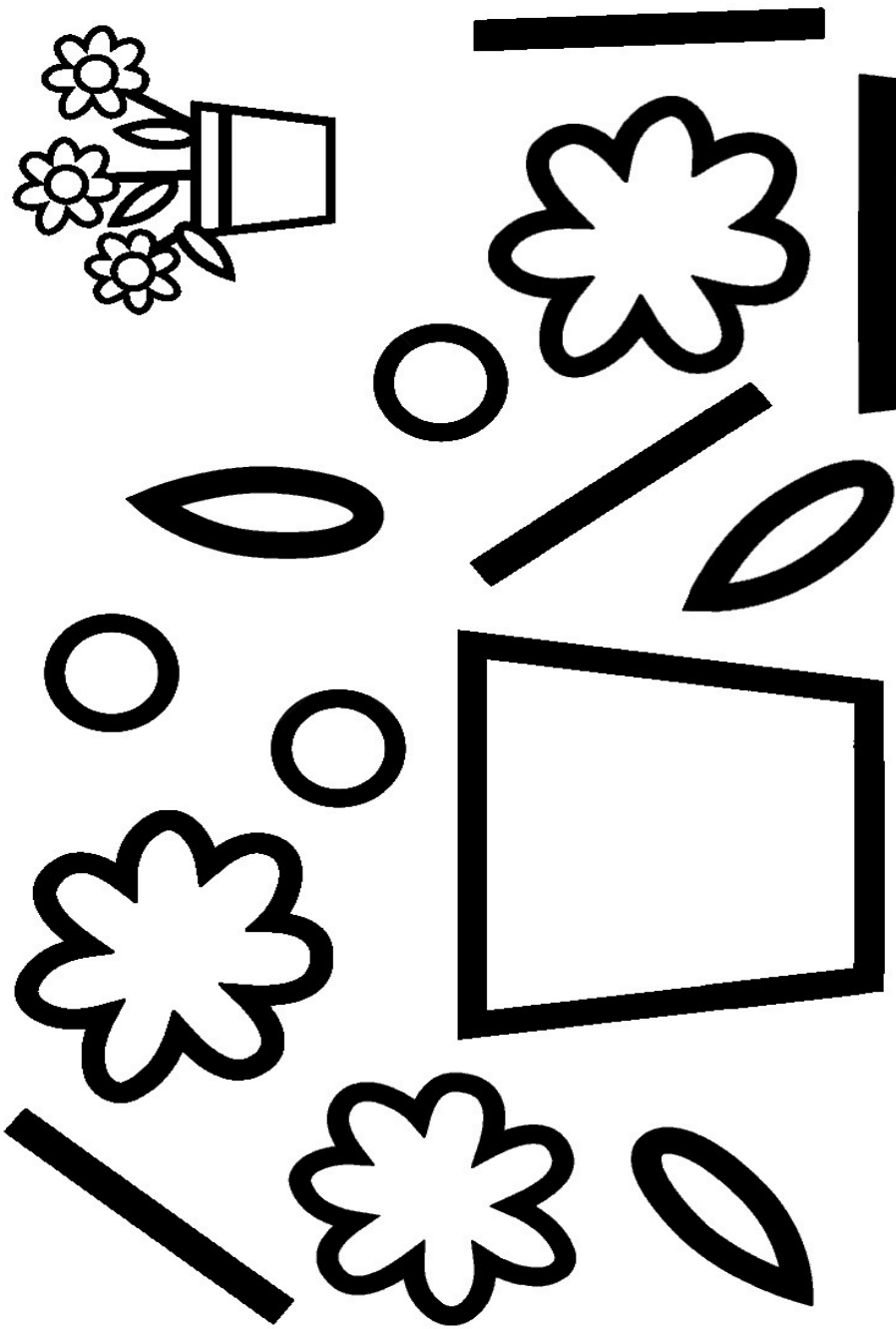
# Pumpkin Craft

cut out all the pieces and glue it together.  
colour the pumpkin.



# Flowers Pot Craft

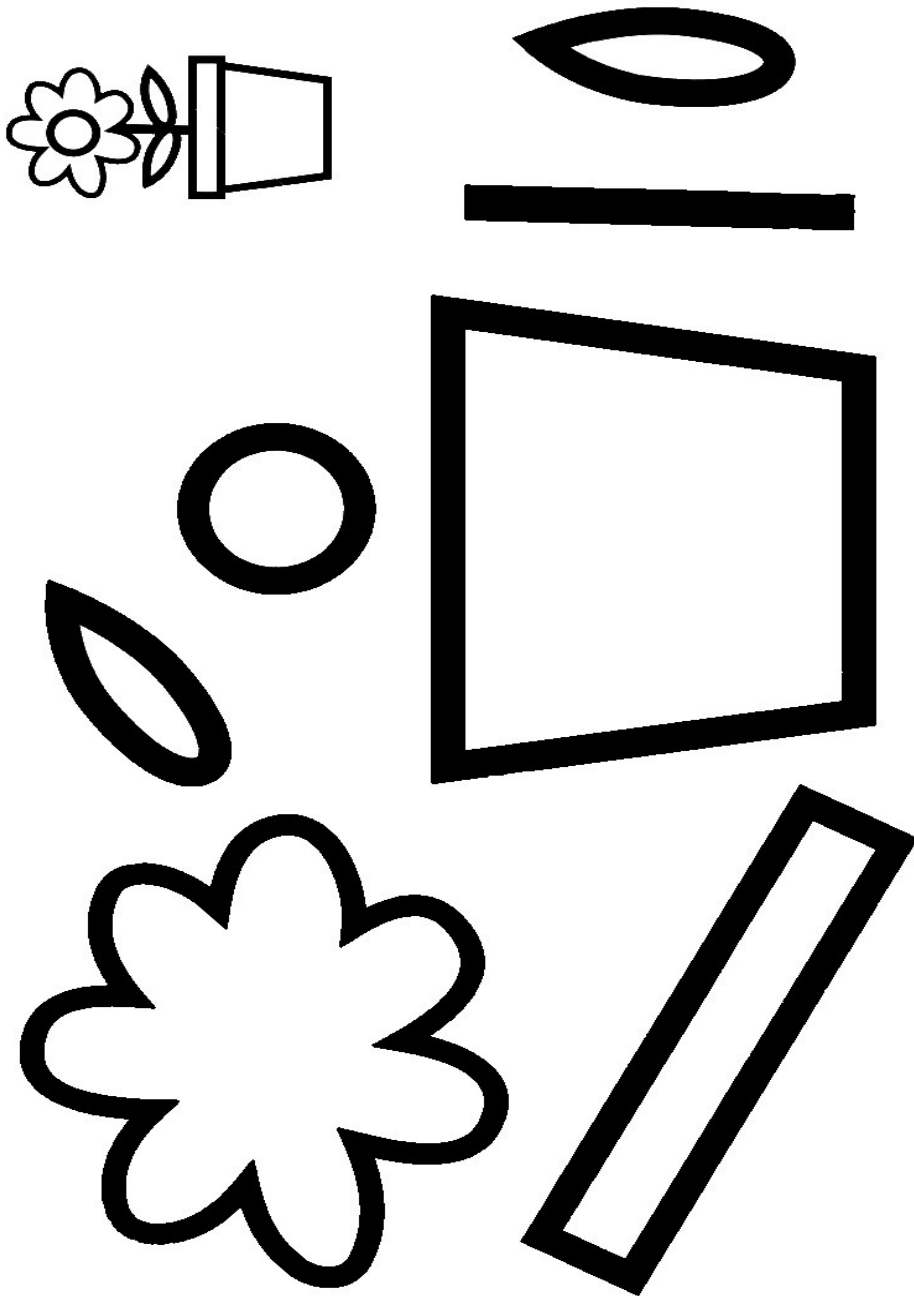
cut out all the pieces and glue it together.  
colour the flower pot.



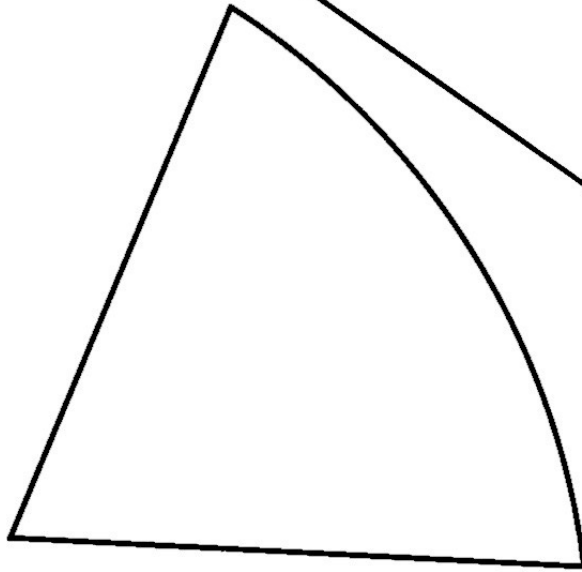
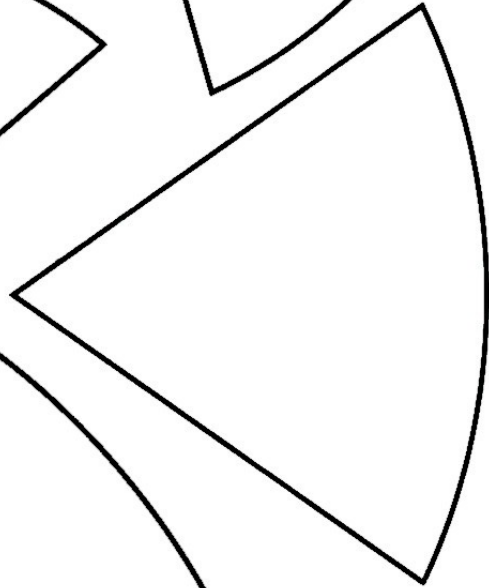
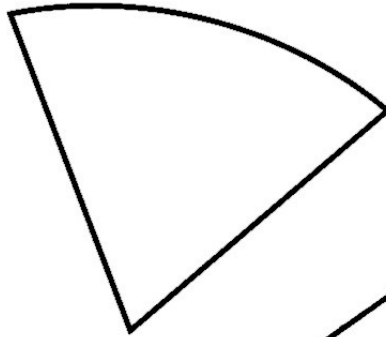
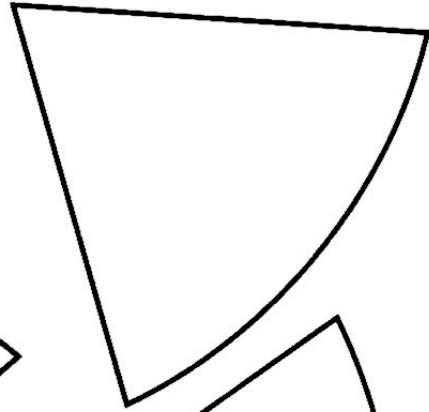
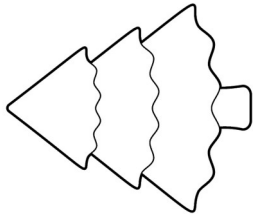


# Flower Craft

Cut out all the pieces and glue it together.  
Colour the flower.



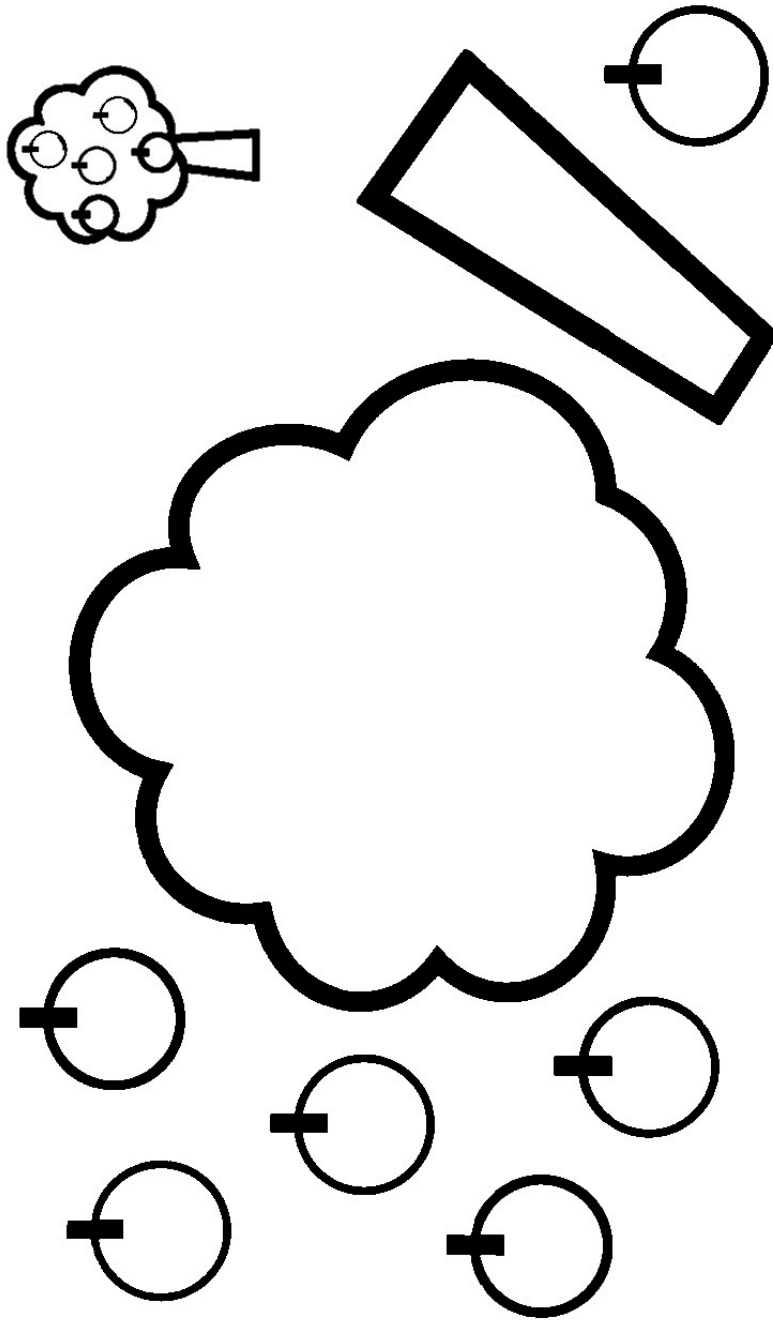
# Green Tree Craft



Cut out all the pieces and glue it together.  
Colour the green tree.

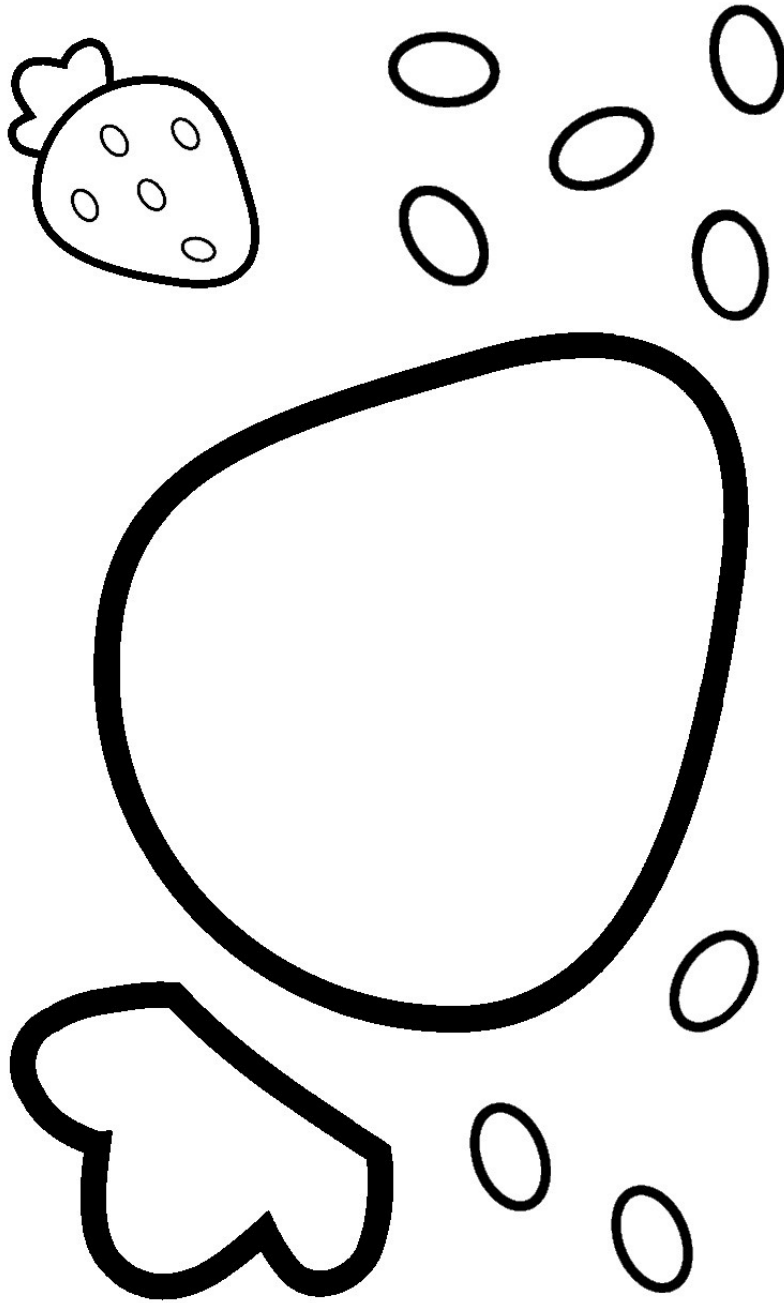
# Apple Tree Craft

cut out all the pieces and glue it together.  
colour the apple tree.



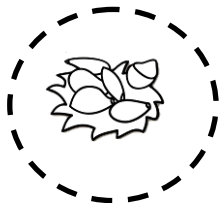
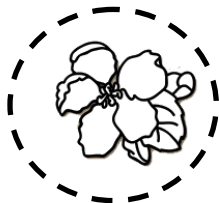
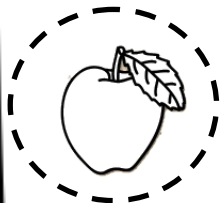
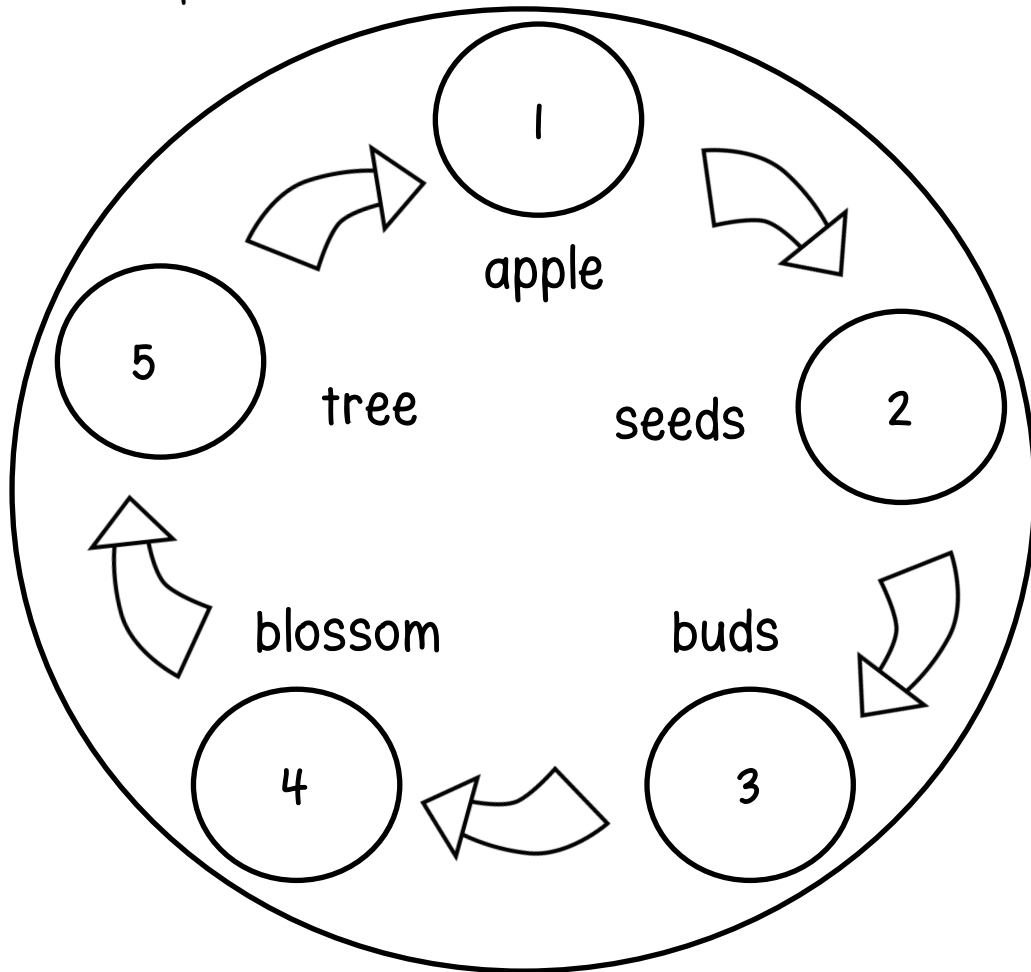
# Strawberry Craft

Cut out all the pieces and glue it together.  
Colour the strawberry.



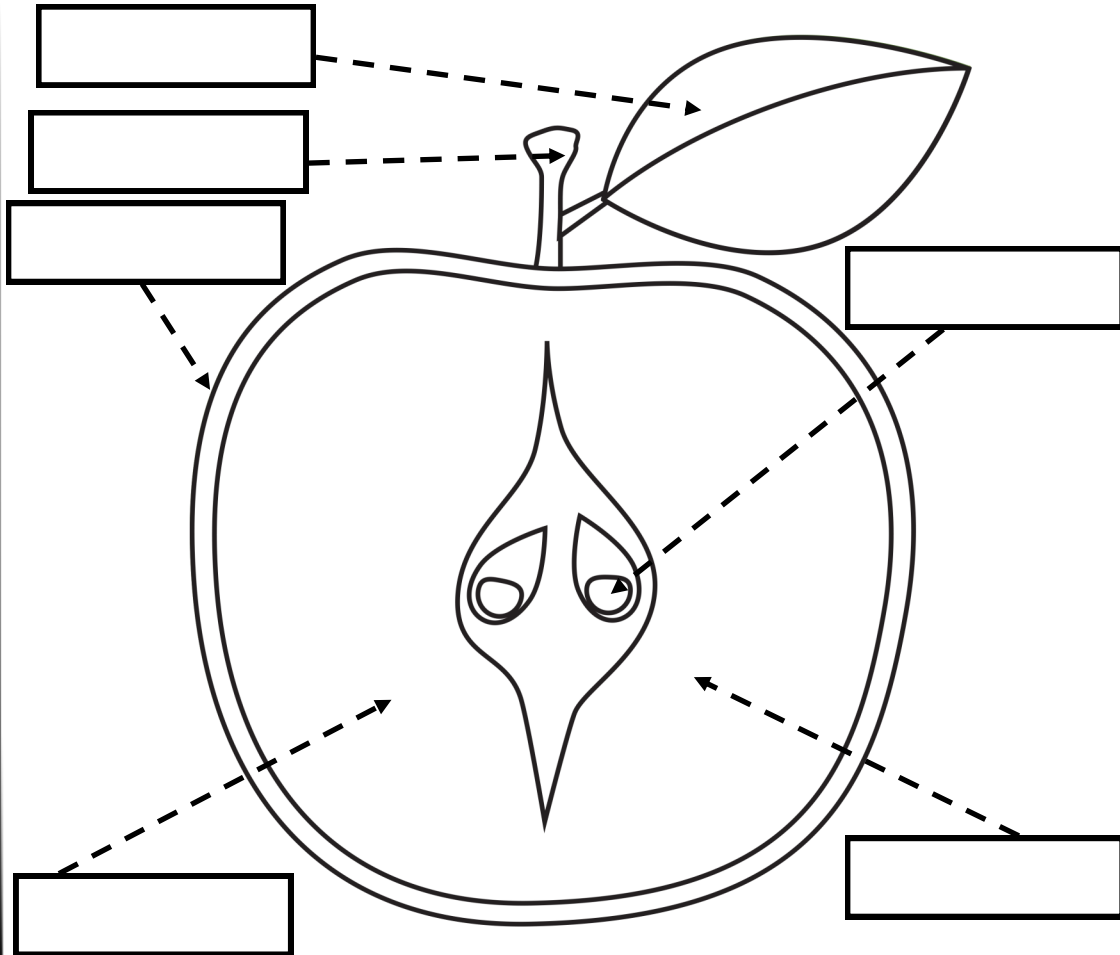
# Life Cycle Of An Apple

Cut out circle label and paste them in the correct boxes.  
Colour the picture.



# Parts Of An Apple

Cut out the apple labels at the bottom and paste them in the correct boxes.



stem

core

skin

leaf

seed

flesh



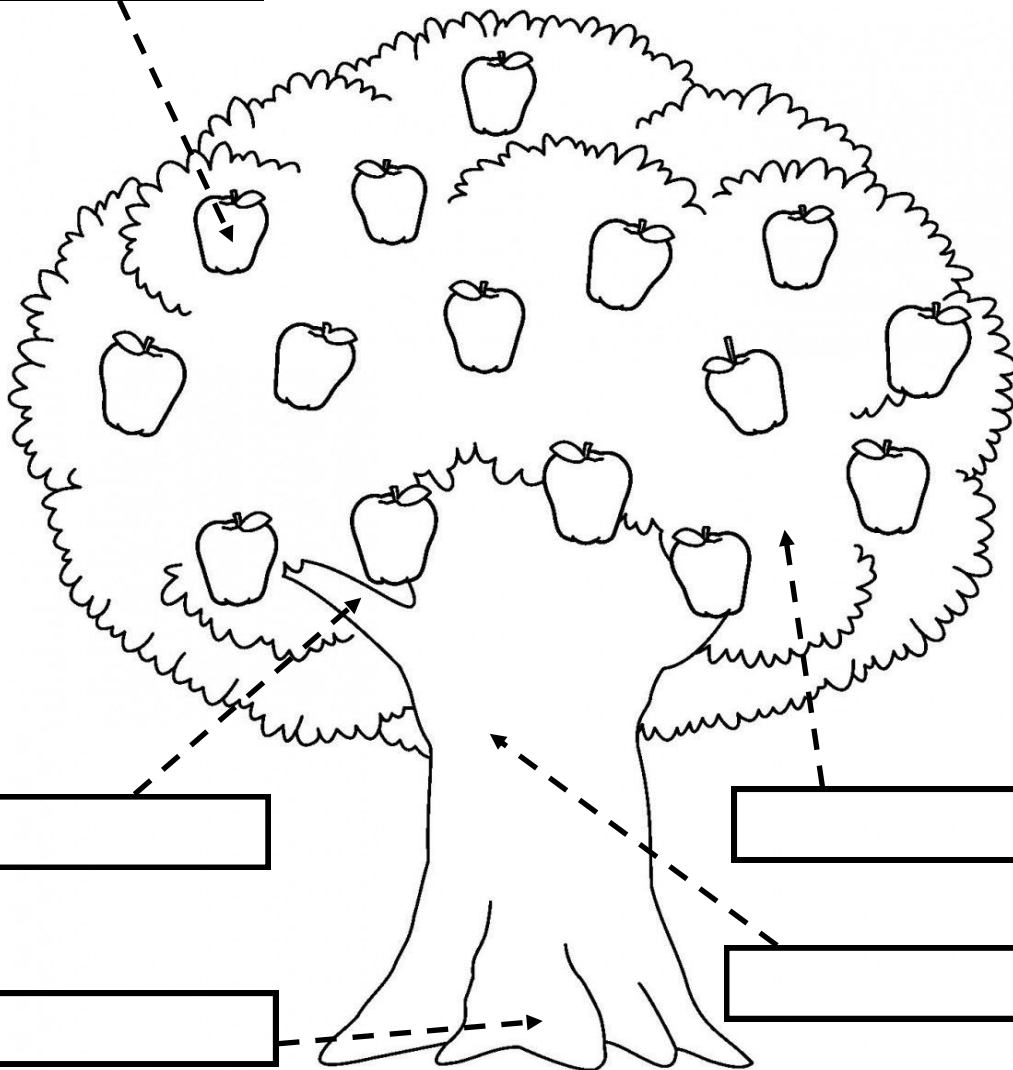
# The Apple Tree

Write the words in the correct boxes.  
Colour the Apples and tree.

Count the apples on the tree and  
write the number. \_\_\_\_\_

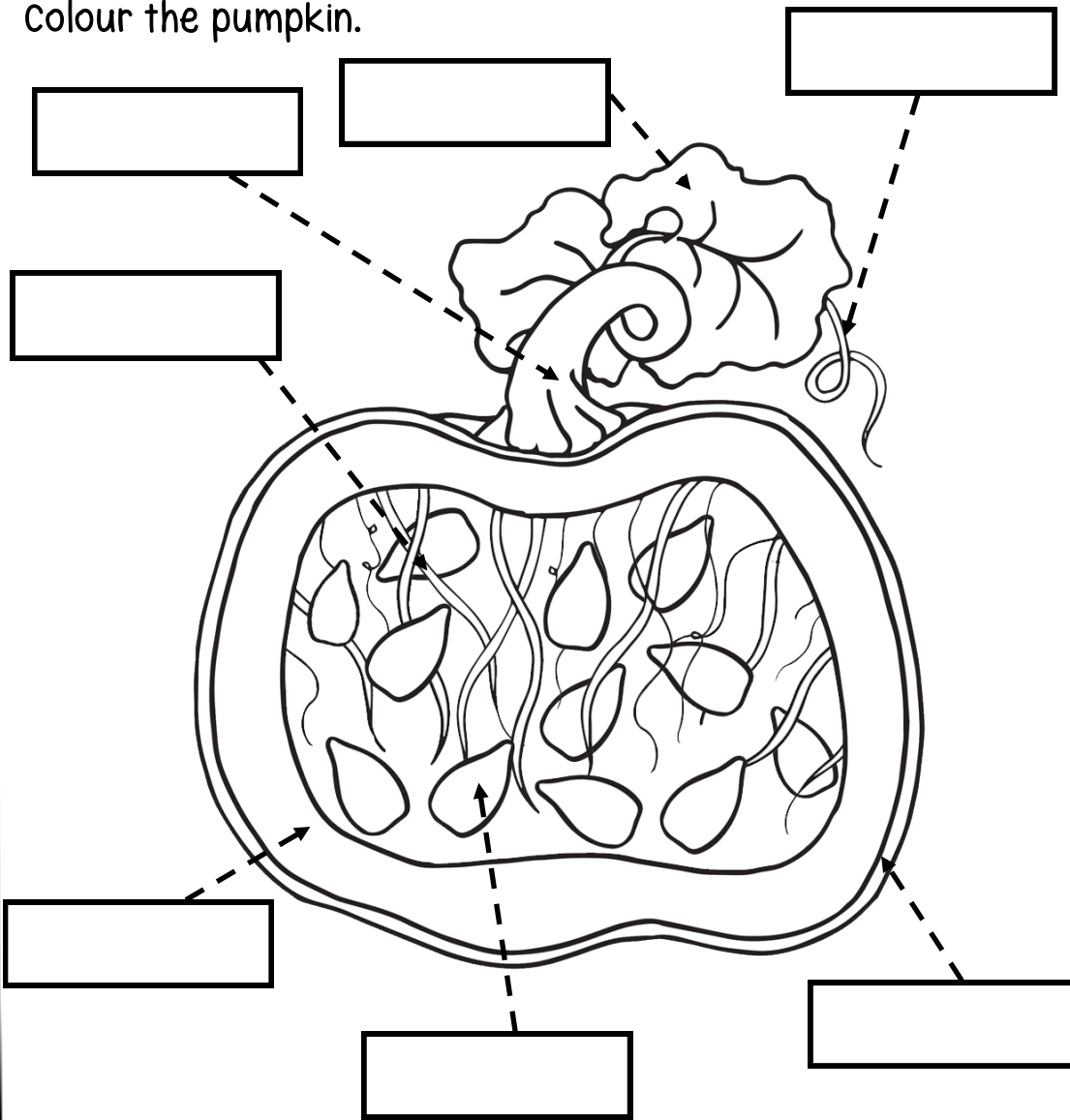
Word bank

Apples  
Leaves  
Roots  
Trunk  
Branch



# Parts Of An Pumpkin

Label the words in the correct blank boxes below.  
Colour the pumpkin.

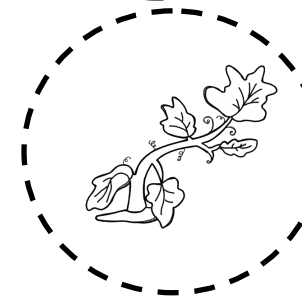
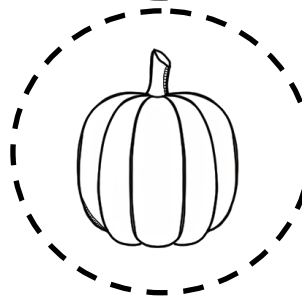
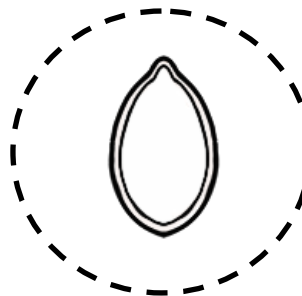
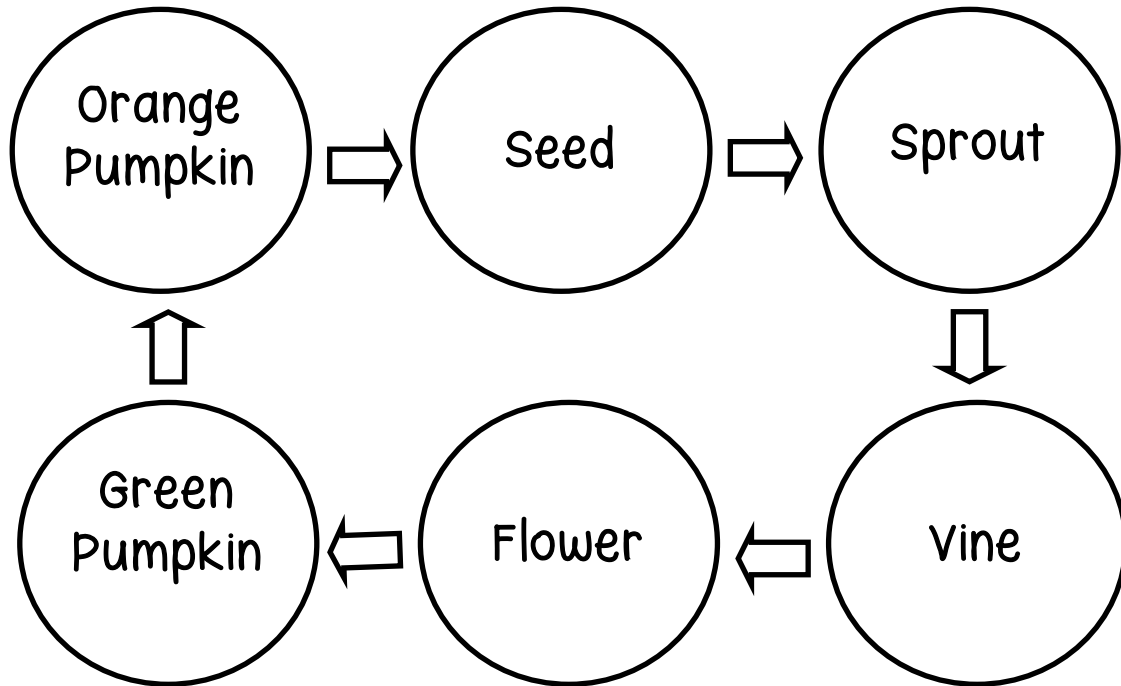


## Word Bank

Leaf   stem   skin   Vine   Flesh   Seed   Pulp

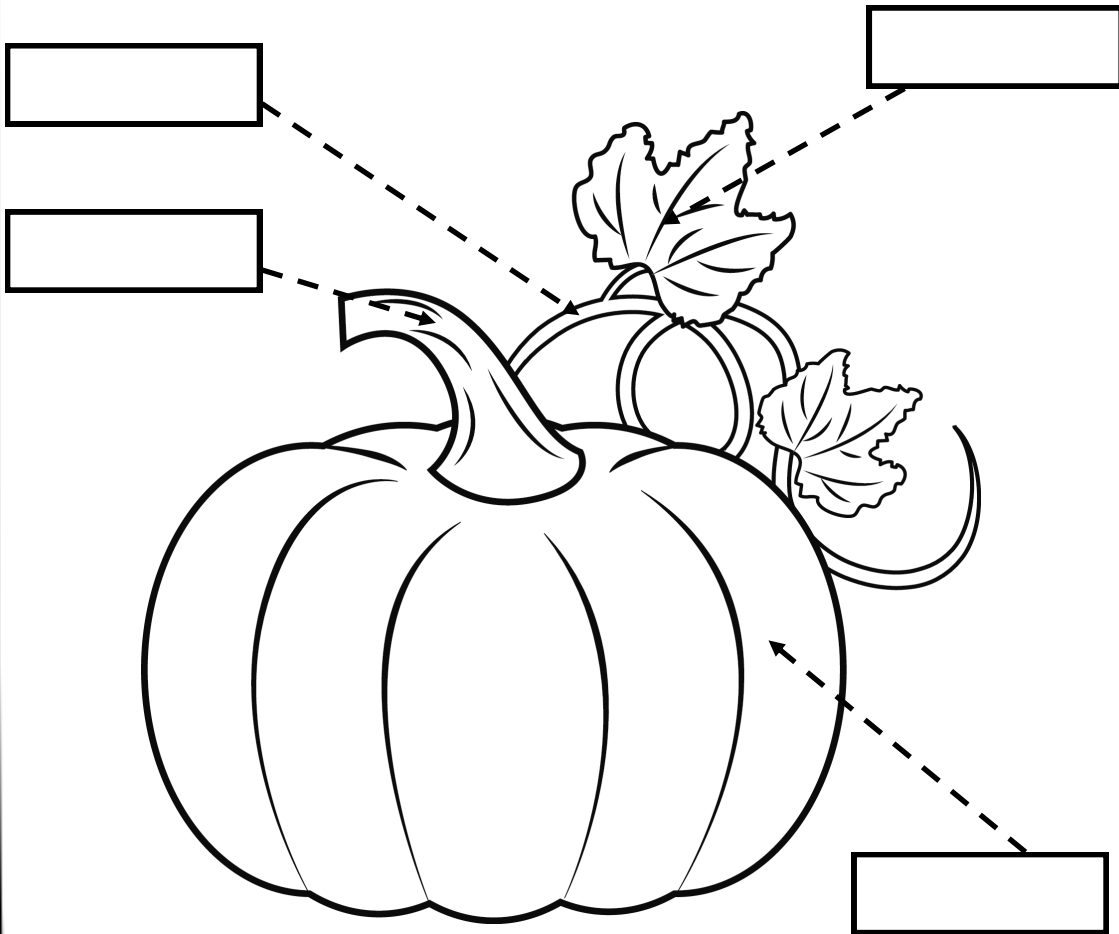
# Life Cycle Of An Pumpkin

Cut out the picture and paste them in the correct boxes.  
Colour the picture.



# Pumpkin

Cut and paste the words label the pumpkin.  
Colour the pumpkin.



Stem    Leaf    Vine    Pumpkin

# About Pumpkin

Pumpkins have pulp and seeds.

Pumpkins are a fruit because they develop from a flower and hold the seeds of the plant.

Pumpkins come in many sizes, shapes, and colours.

Pumpkins are a type of squash

Pumpkin have a hard skin, or shell, and grow on vines.

Cut a pumpkin open, you know that it is mostly hollow but has a lot of slimy string and many seeds inside.

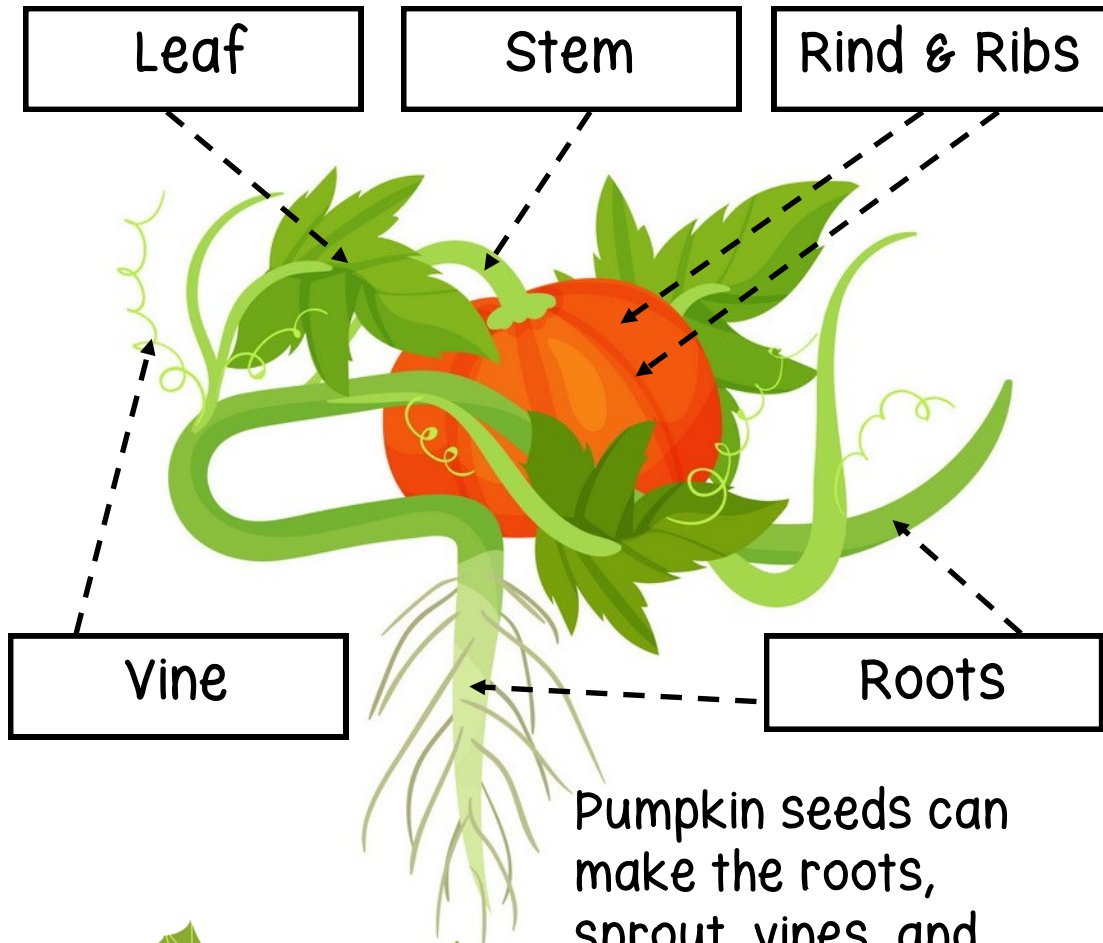
pumpkin has about 500 seeds.

Pumpkins originally came from Central America, but are now grown on all the continents except for Antarctica.





# About Pumpkin



Pumpkin seed grows underground.

Pumpkin seeds can make the roots, sprout, vines, and flowers.

Pumpkin roots start to grow sprout comes out top of the soil makes vines and flowers to grow.



# Labels The Pumpkin

Label the words in the correct blank boxes below

